

Event Location





KAOS



KAOS Berlin is located in the heart of the former industrial landscape in Oberschöneweide right next to the Spree river.

Unplastered red brick walls, huge industrial windows, high ceilings and lovely wood designs create together a unique location for celebrations and events.

The extraordinary room concept is the product of the creative collaboration of our Coworking- Community.



Individual Events

All our areas can be individually designed and flexibly converted.

So you can organize both a seated dinner, as well as large celebrations with us.

Diverse usage

- Meetings / Workshops
- Company parties
- Private parties
- Teambuilding events

Rooms

- Studio
- Panorama room
- Hall
- Terrace



Meetings / Workshops





Company parties





Private parties





Teambuilding

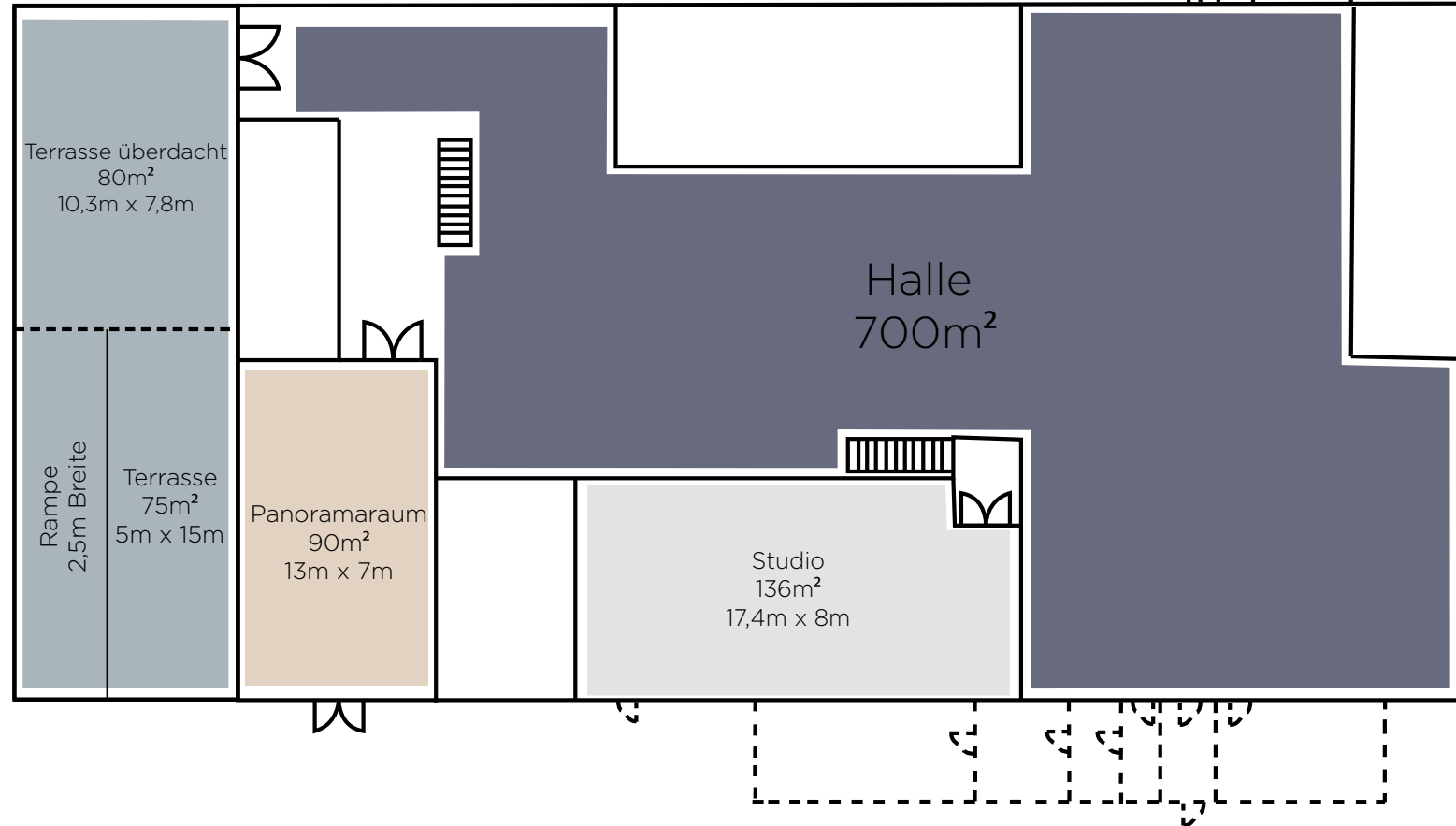
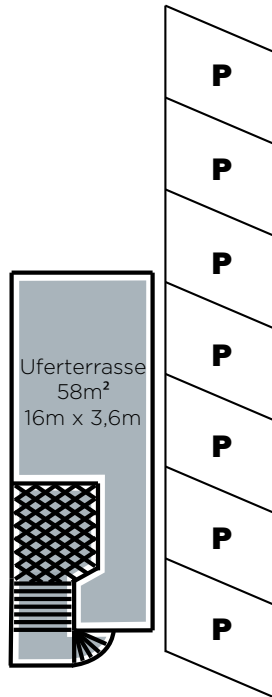




Teambuilding



Ground plan



Rooms:

Studio Panorama room Hall Terrace



Studio (1.FF)

Room

| | |
|--------------|---------------------|
| Total space | 136 sqm |
| Gable height | 4 m |
| Roof height | 6 m |
| Floor | wooden floor (gray) |

Capacities

| | |
|-------------|-----------|
| Reception | 160 Pers. |
| Row seating | 140 Pers. |
| Banquet | 110 Pers. |
| U-Shape | 45 Pers. |
| Gala | 90 Pers. |

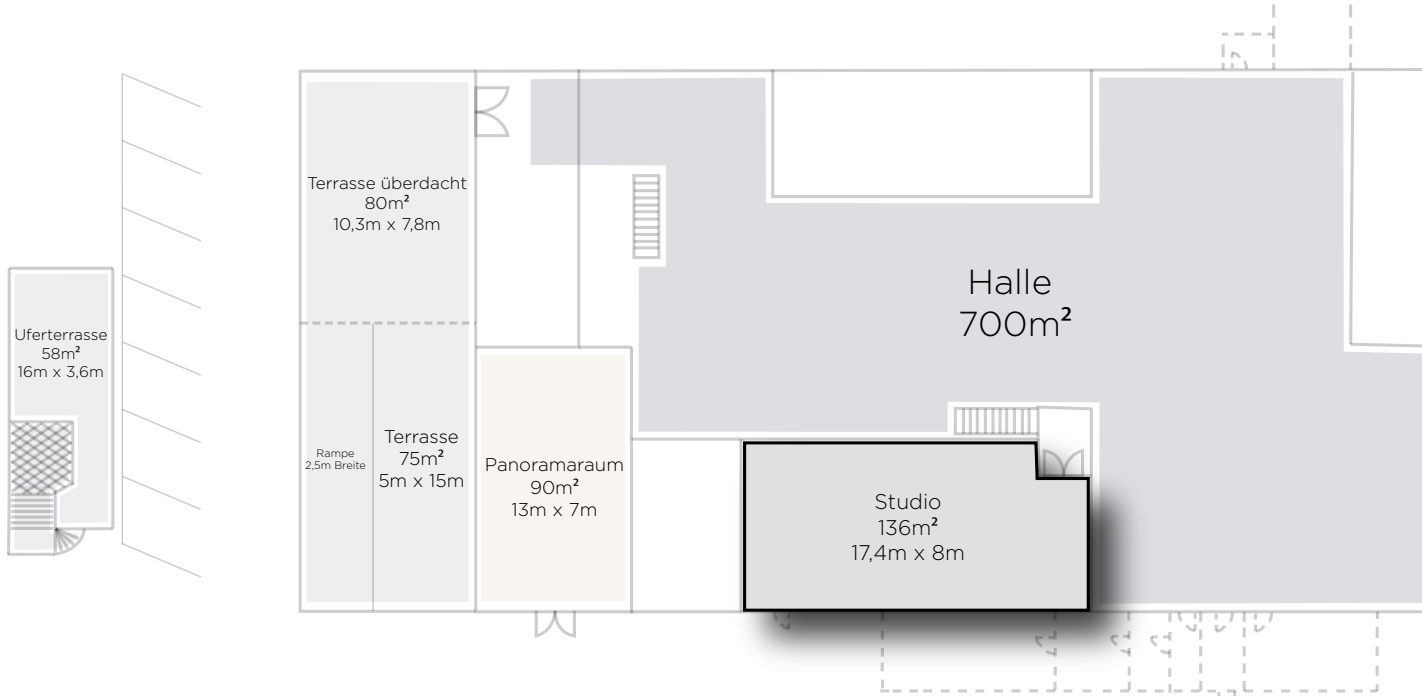
Tech

Lights: Dimmable halogen lighting

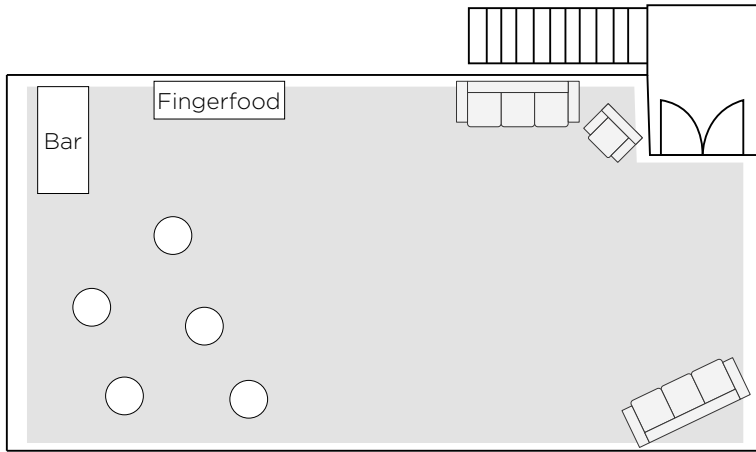
Heavy Duty Power Connectors: 3 x 16A

Infrastructure

| | |
|-----------------------|-------------|
| Wheelchair accessible | No |
| Heated | Arrangeable |



Bestuhlung Studio

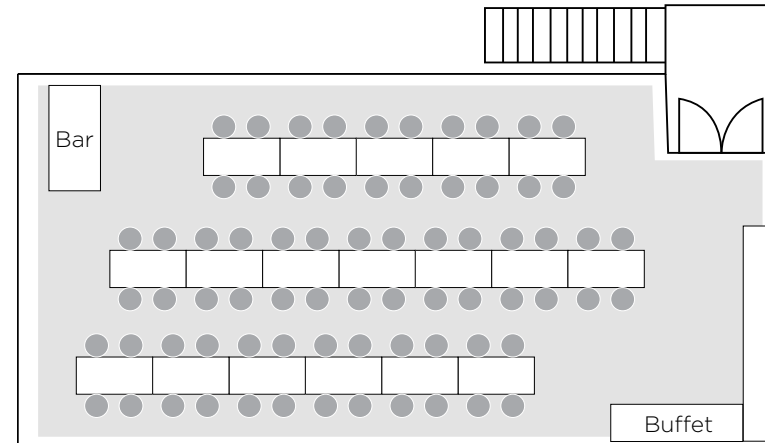


Reception:

up to 160 people

Mixed sitting areas and high tables

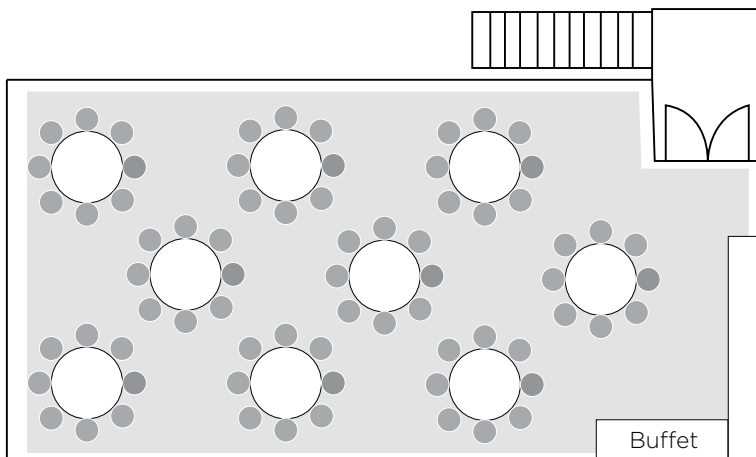
Bar und Buffet areas



Banquet seating

up to 110 people

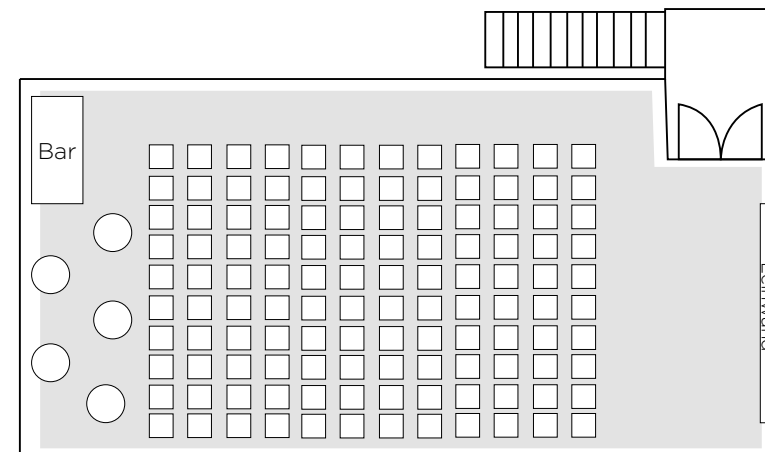
Bar und Buffet areas



Gala seating:

up to 90 people

Bar und Buffet areas



Row seating

up to 140 people

Screen and projector

With a bar and high tables for breaks



Panorama room

Room

| | |
|----------------|-------------|
| Total space | 90 sqm |
| Ceiling height | 5 m |
| Floor | stone floor |

Capacities

| | | |
|-------------|-----|-------|
| Reception | 120 | Pers. |
| Banquet | 70 | Pers. |
| Row seating | 100 | Pers. |
| U-Shape | 50 | Pers. |
| Gala | 60 | Pers. |

Tech

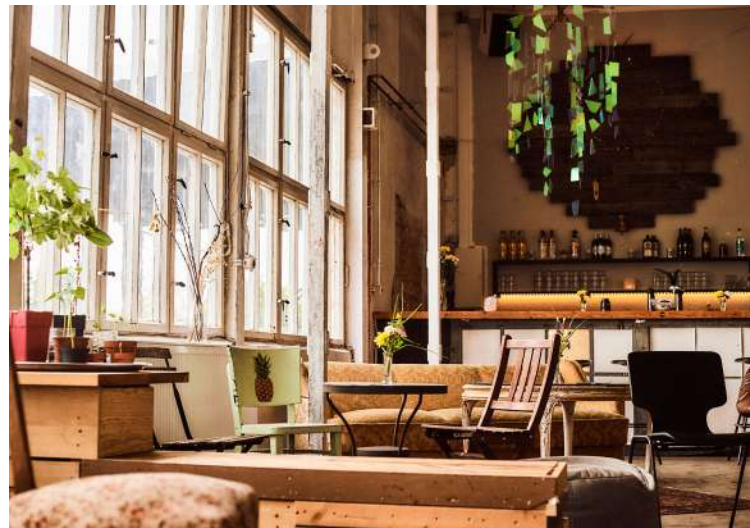
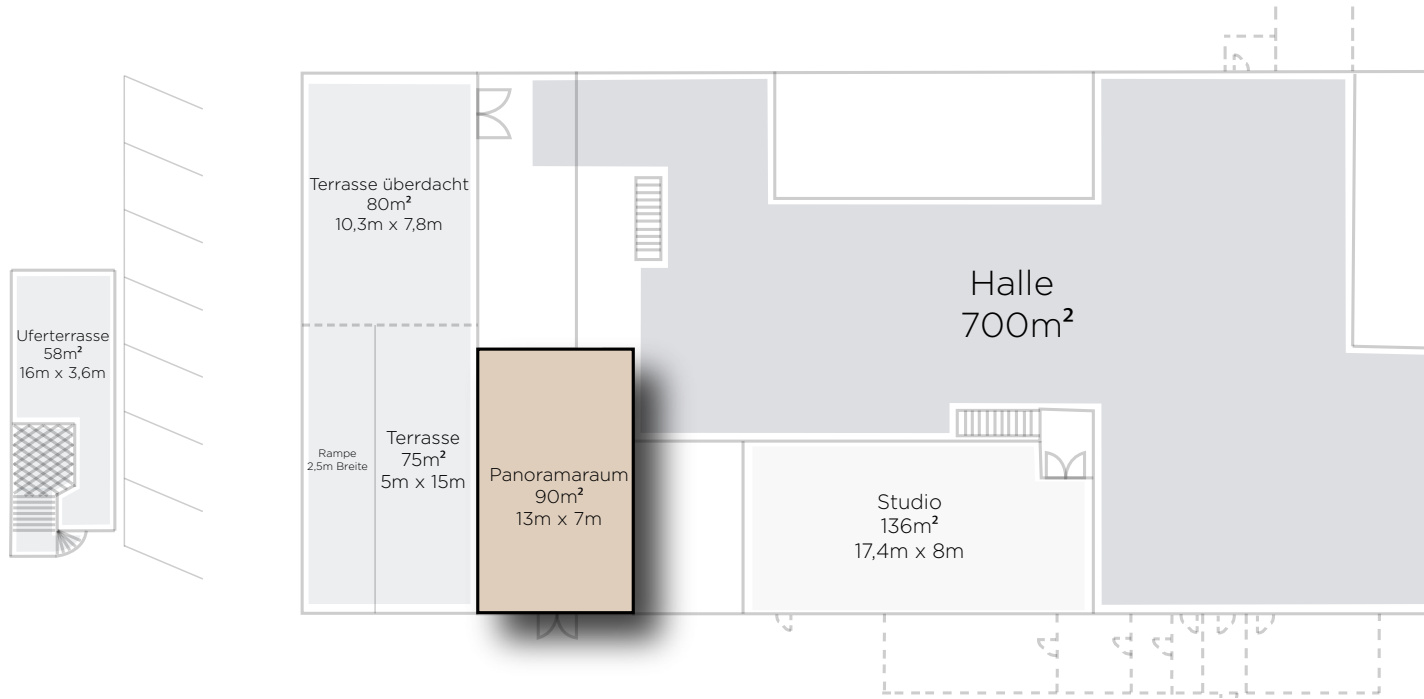
Dimmable event lighting

Screen (3x5m) and beamer for presentations

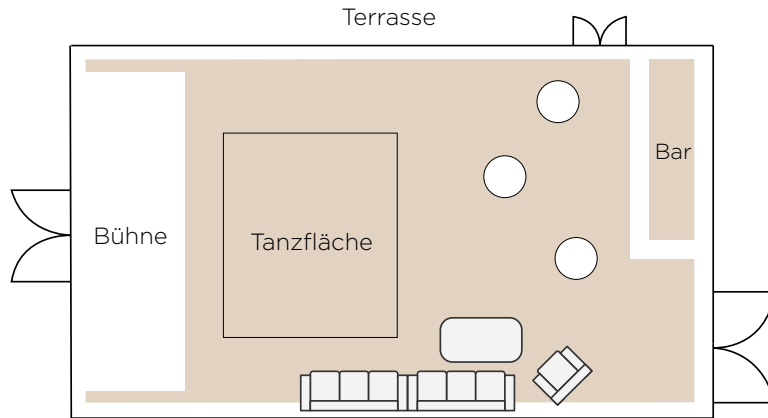
Heavy Duty Power Connectors: 1 x 16A

Infrastructure

| | |
|-----------------------|-----|
| Wheelchair accessible | Yes |
| Heated | Yes |

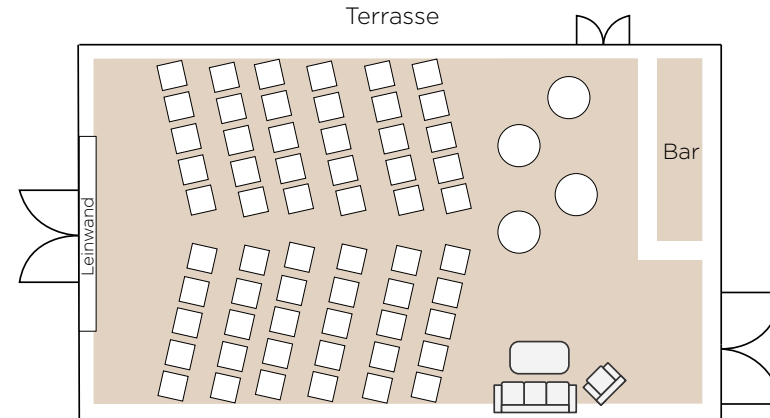


Bestuhlung Panoramaraum



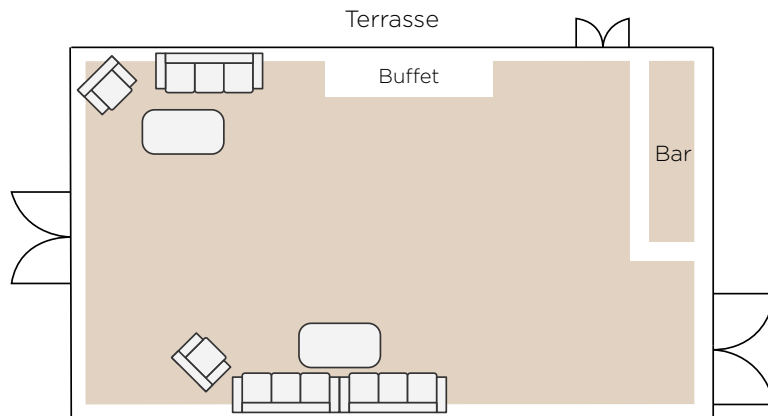
Concert:

- up to 150 people
- Mixed sitting areas and Bar tables
- Bar, stage and dance floor



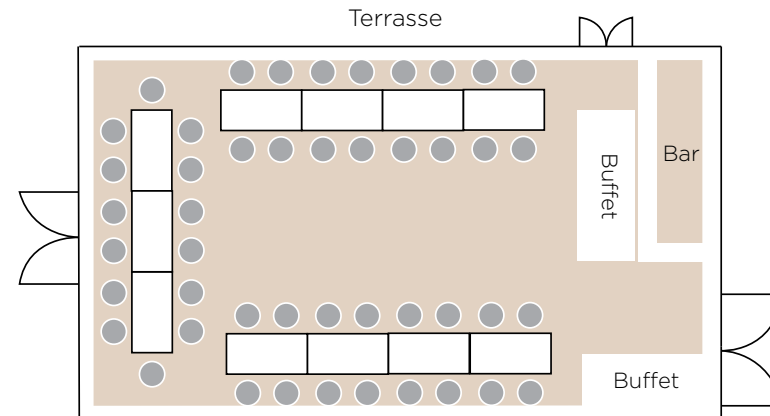
Row seating

- up to 100 people
- Screen and projector
- with a bar and high tables for breaks



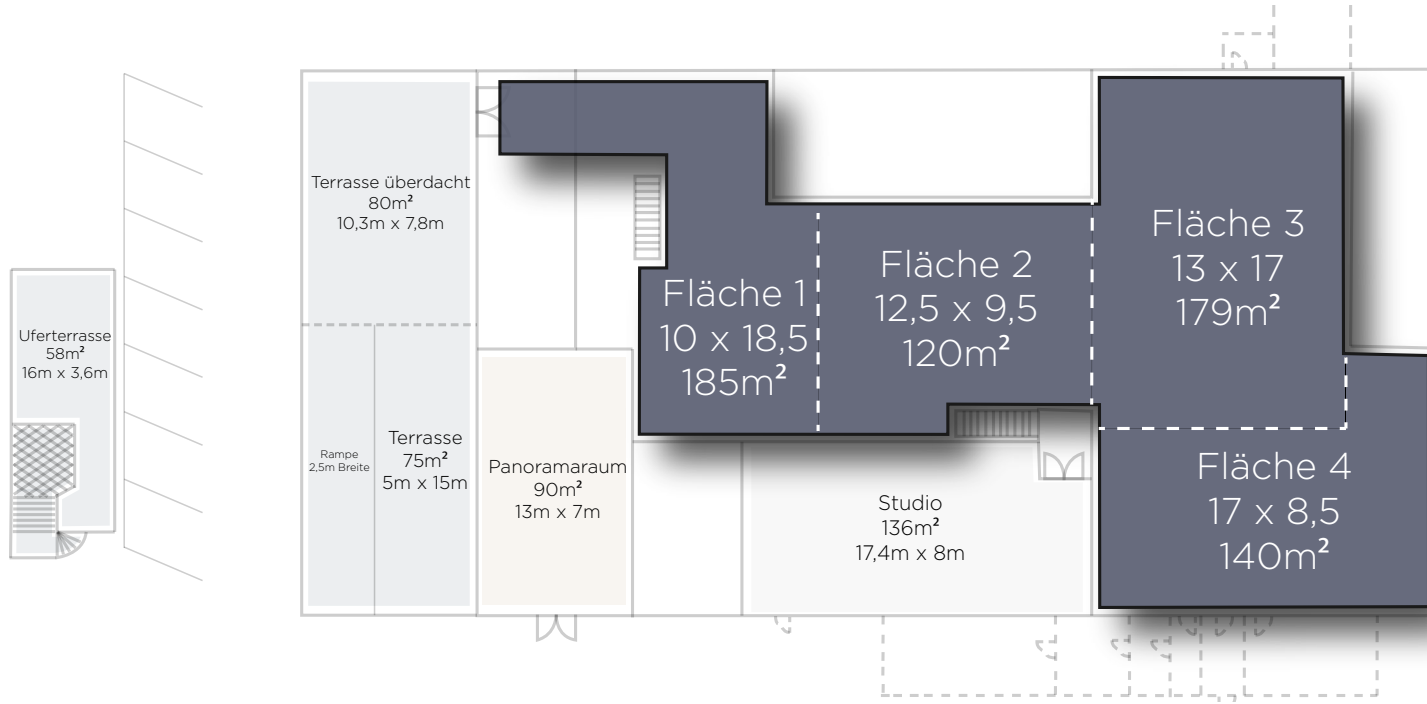
Reception:

- up to 120 people
- Mixed sitting areas
- Bar und Buffet areas



U-shape seating:

- up to 50 people
- Bar und Buffet areas



Hall

Room

| | |
|--------------------|----------------|
| Total space | 700 sqm |
| Ceiling height | 13 m |
| Steel beams height | 10 m |
| Floor | concrete floor |

Capacities

| | |
|-------------------|-----------|
| Reception | 700 Pers. |
| Row seating (1&2) | 350 Pers. |
| Row seating (3&4) | 400 Pers. |
| Banquet | 350 Pers. |
| Gala | 300 Pers. |

Tech

Lighting: (Par64 x 50)

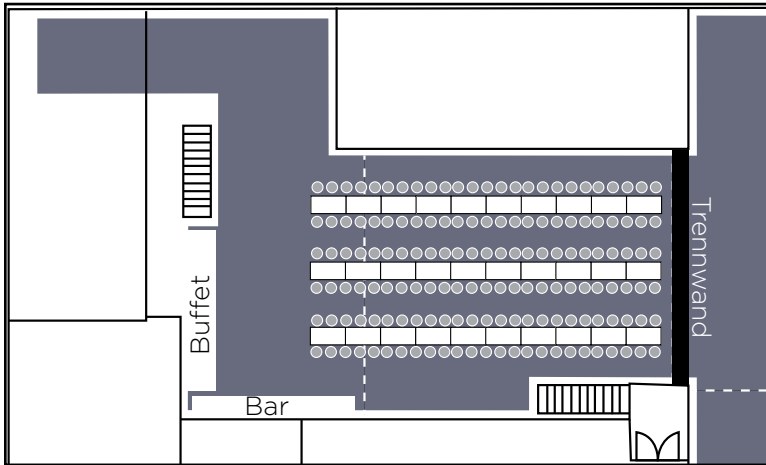
Heavy Duty Power Connectors:
3 x 32A und 8 x 16A

Infrastruktur

| | |
|-----------------------|-------------|
| Wheelchair accessible | Yes |
| Heated | Arrangeable |



Bestuhlung Halle



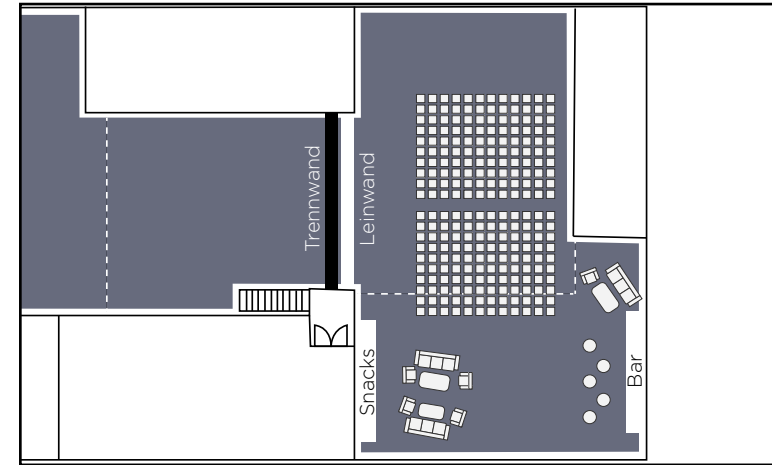
Banquet seating

Area 1 and 2

up to 150 people

Bar and buffet areas

Separated from area 3 and 4 by a separation wall



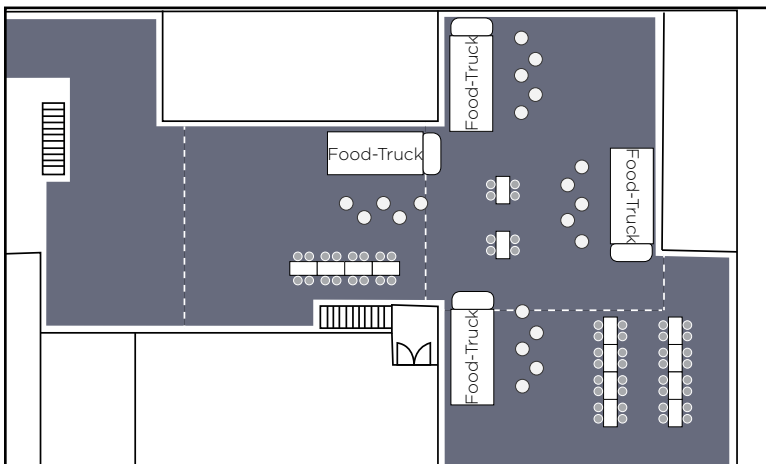
Cinema style

Area 3 and 4

240 people

Sitting areas with a bar and buffet areas on the sides

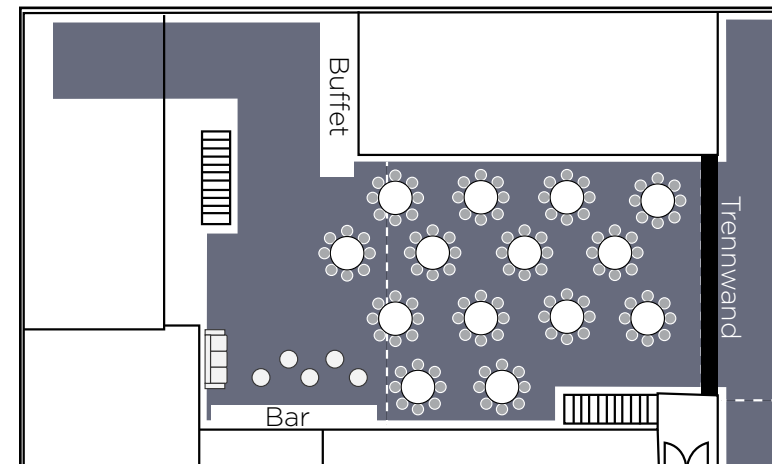
Separated from area 1 and 2 by a separation wall



Reception

up to 600 people

with Foodtrucks, high tables and Banquets



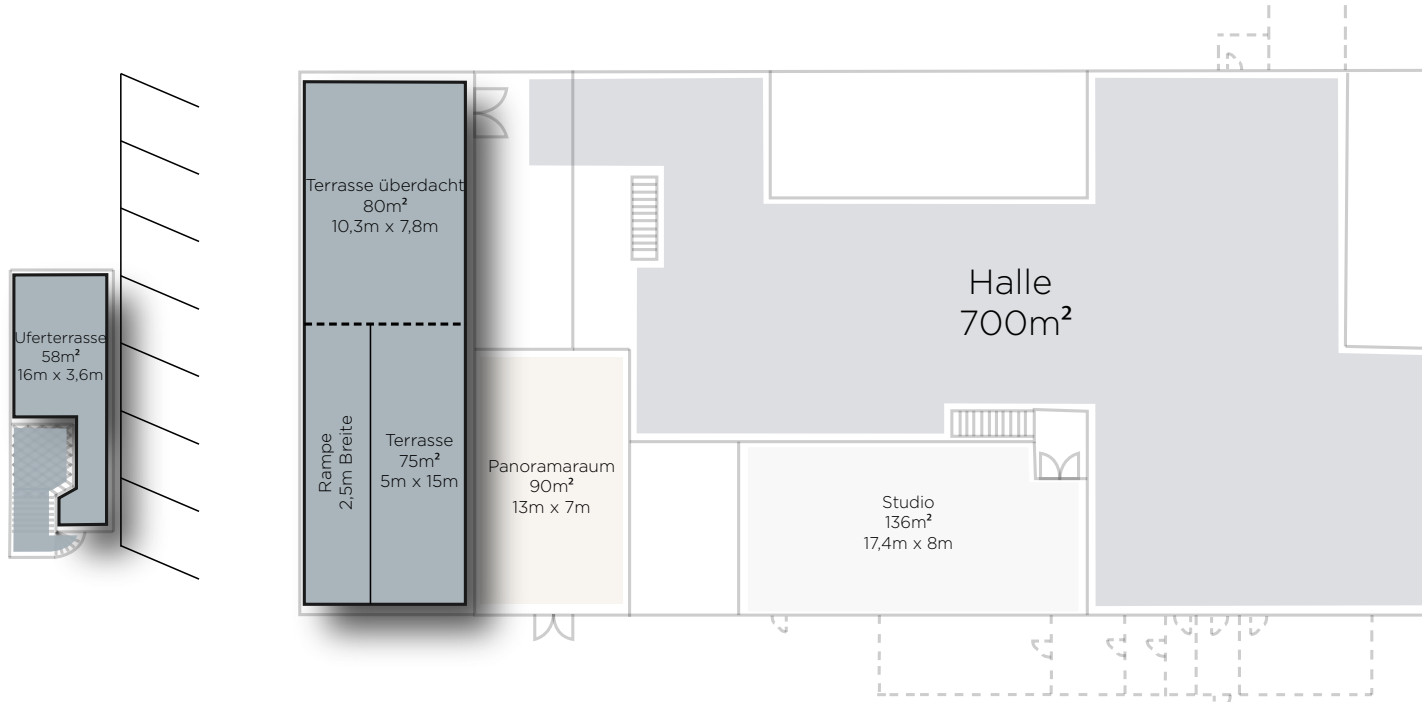
Gala seating

Area 1 and 2

115 people

Bar and buffet areas

Separated from area 3 and 4 by a separation wall



Terrace

Terrace

Total area 155 sqm
Ceiling height 6 m
Floor stone floor

Waterfront terrace

Total area 60 sqm
Floor wooden floor

Capacity

Reception 200 Pers.

Tech

Light: (6xPar56)

Heavy Duty Power Connectors: 2x16A

Infrastructure

Wheelchair accessible Yes
Parking spaces Yes





Tech

Sound

- 4 Top KME CSA-400 D(12"+1")
- 4 Bass KME CBA-600 D(15")
- 1 Monitorbox KME CSA-400 D(12"+1")
- DJ-Mixer, Pioneer DJM 800

Projection

Screen and projector for presentations in Full HD resolution

Heating

Hot air turbines/ patio heaters

Moderation equipment

Services

Catering

By arrangement via external providers

Entertainment

Bands, artists or DJs can be booked through us.

Decoration

Per request

Beverages

Bar service and drinks package

Equipment

Flip-Charts

Presentation case

Furniture

Chairs, tables, tablecloths and covers

Dishes

Cutlery, glasses and plates

(Additional equipment available on request)

Partners





Your way to us

KAOS Berlin
Wilhelminenhofstraße 92, 12459 Berlin

By car

- Exit at Späthstraße
- 10 rentable parking spaces

By public transportation

- S-Bahn Station Schöneweide
- Tram Station Wilhelminenhofstr. / Edisonstr. (3 minute walk)

Contact

vermietung@kaosberlin.de
www.kaosberlin.de
Telefon: 030 68910739

