

Shooting Location





KAOS



The creative KAOS brings people together through the unique combination of coworking, event and shooting locations and offers them the freedom to develop, to inspire one another, to support one another and to learn from one another.

Our light-flooded location in industrial charm directly on the Spree is characterized by a creative environment by our coworkers, who can support you in realizing your shoot with individually built backdrops.

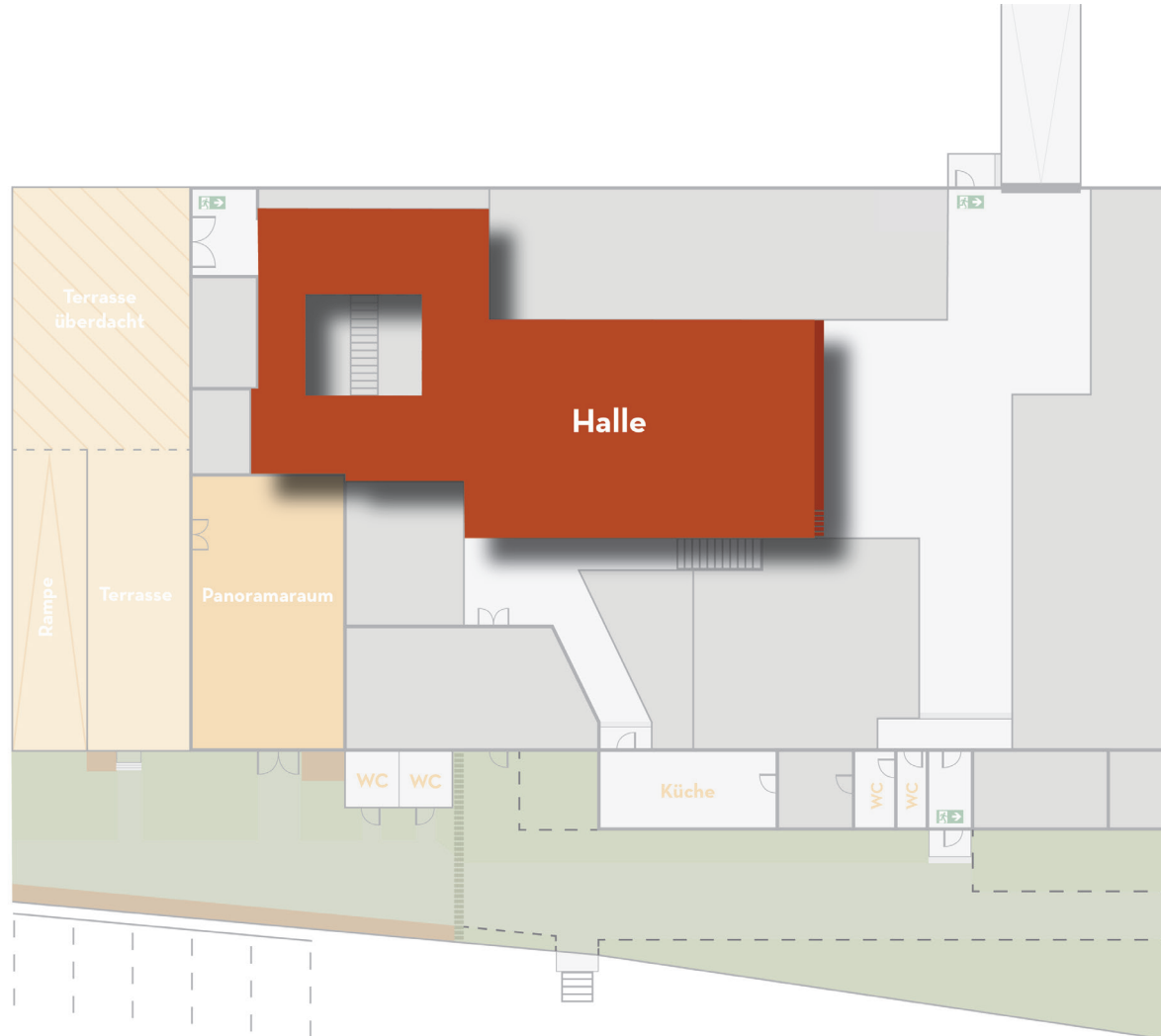


Räumlichkeiten: **Hall** **Gallery** **Panorama room** **Terrace**

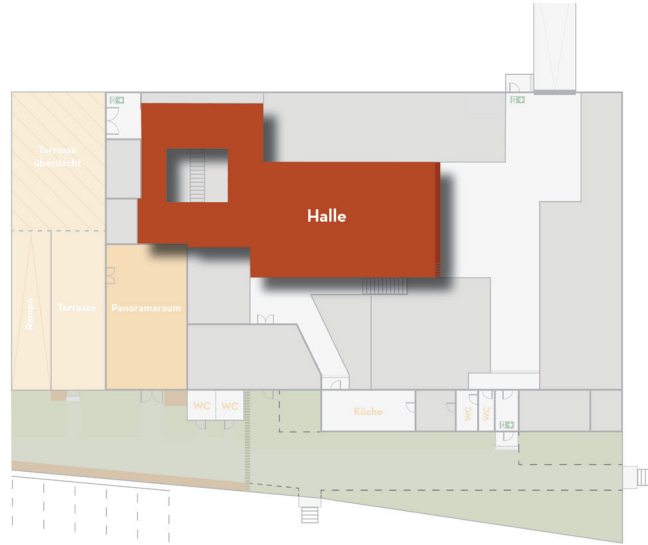
Hall

- Up to 160 sqm of floor space, 8.5 m wide * 19 m long; Ceiling height in total 10 m, steel framework starts at a height of 6.5 m
- Light loads can be hung from the numerous steel girders.
- At ground level, forklift and loading ramp are available
- Cars can drive into the hall without any problems
- Power connections 16A
- Experienced on-site set builders will promptly implement your ideas
- Industrial charm with steel framework, concrete floor
- Live sound recordings are only possible under special conditions, as our hard-working coworkers work a lot and make noise

EG - Halle



EG - Halle



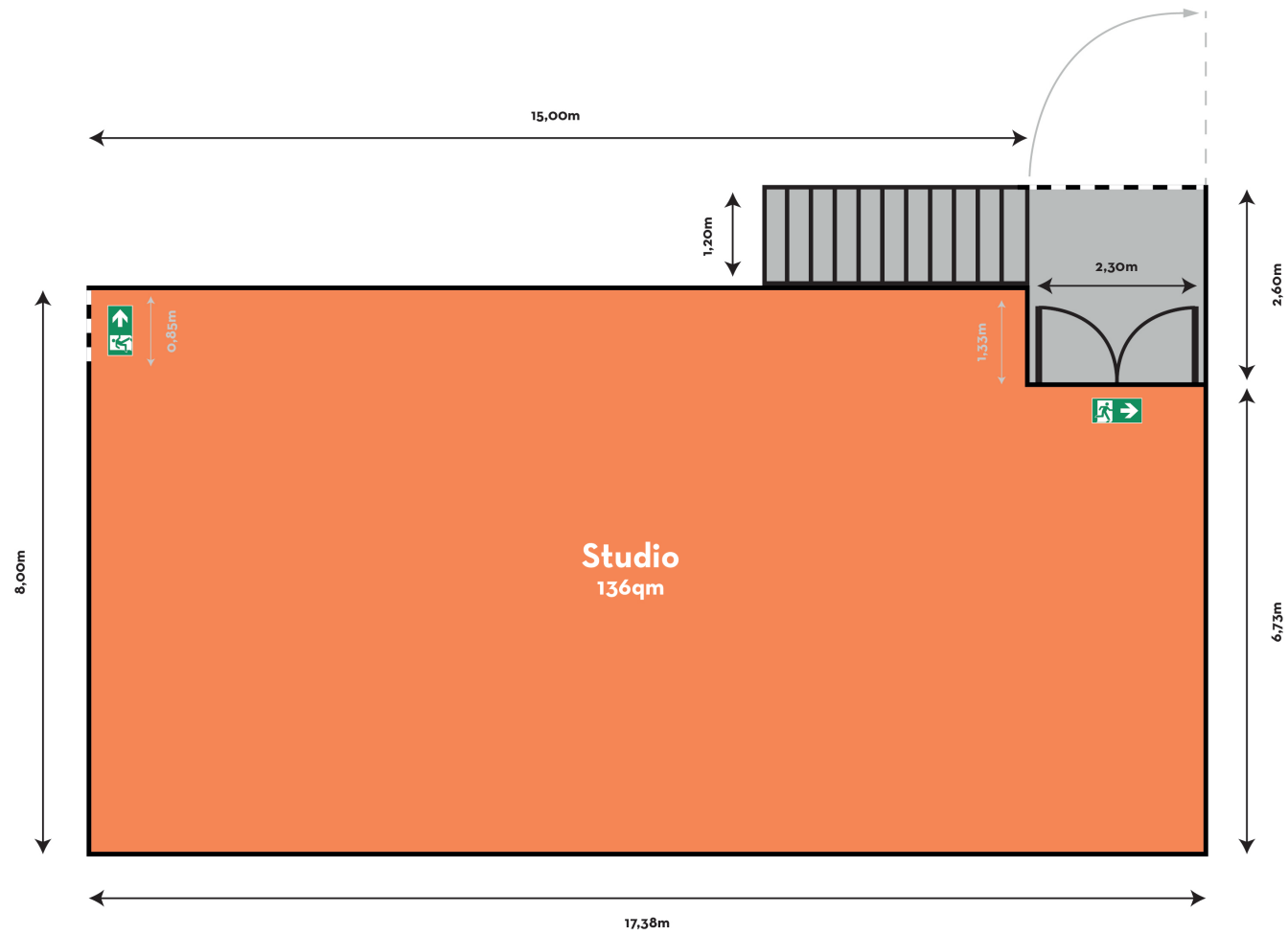


Gallery 1. OG

Room

Total space	136 sqm
Gable height	4 m
Roof height	6 m
Floor	wooden floor (grey)

- white brick walls
- natural daylight
- dimmable halogen lighting
- high voltage 3x16A

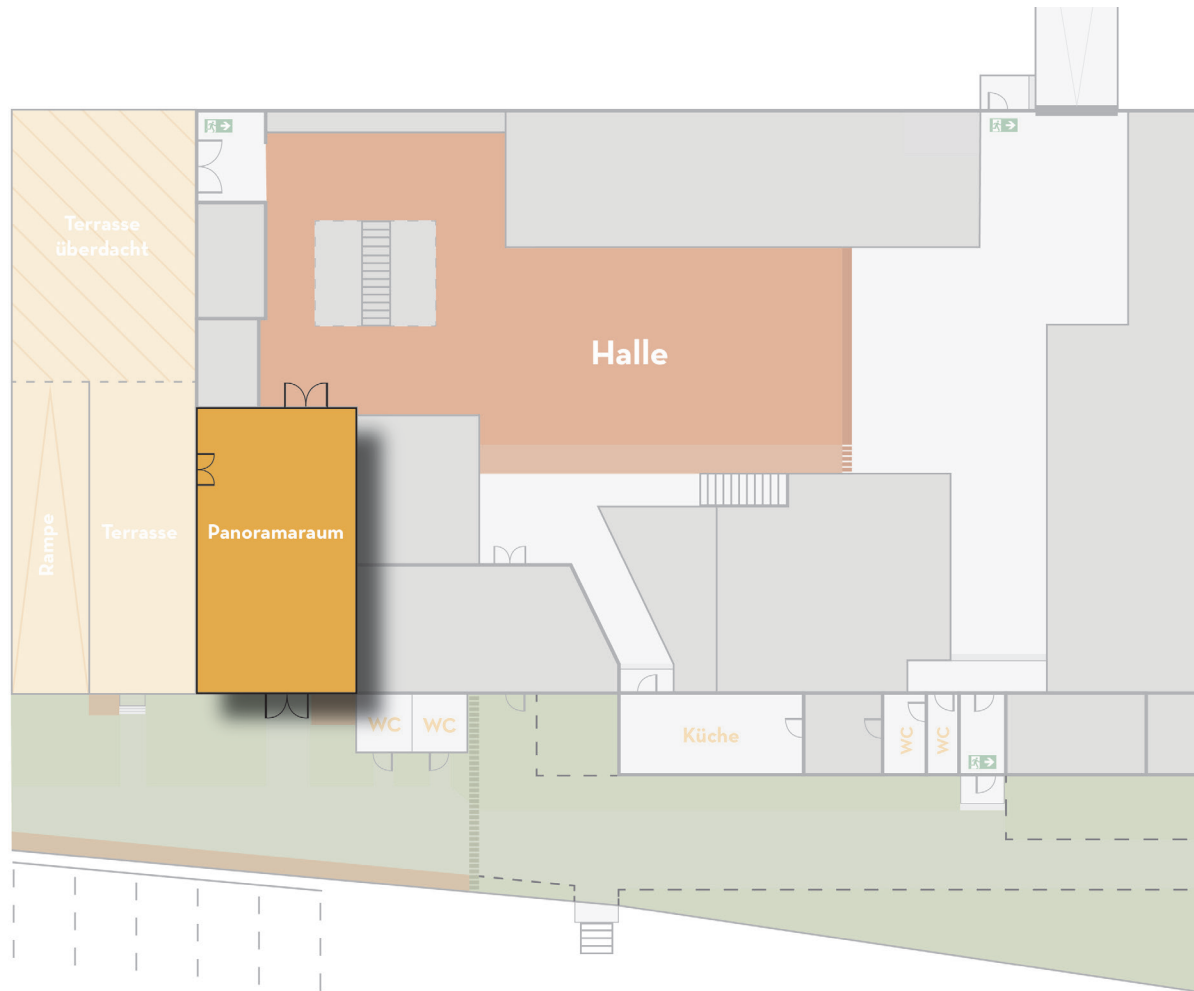


Equipment

- Black and white molleton curtains
- bookable
- Flash heads
- Background systems
- Tripods
- Softboxes
- Ring light

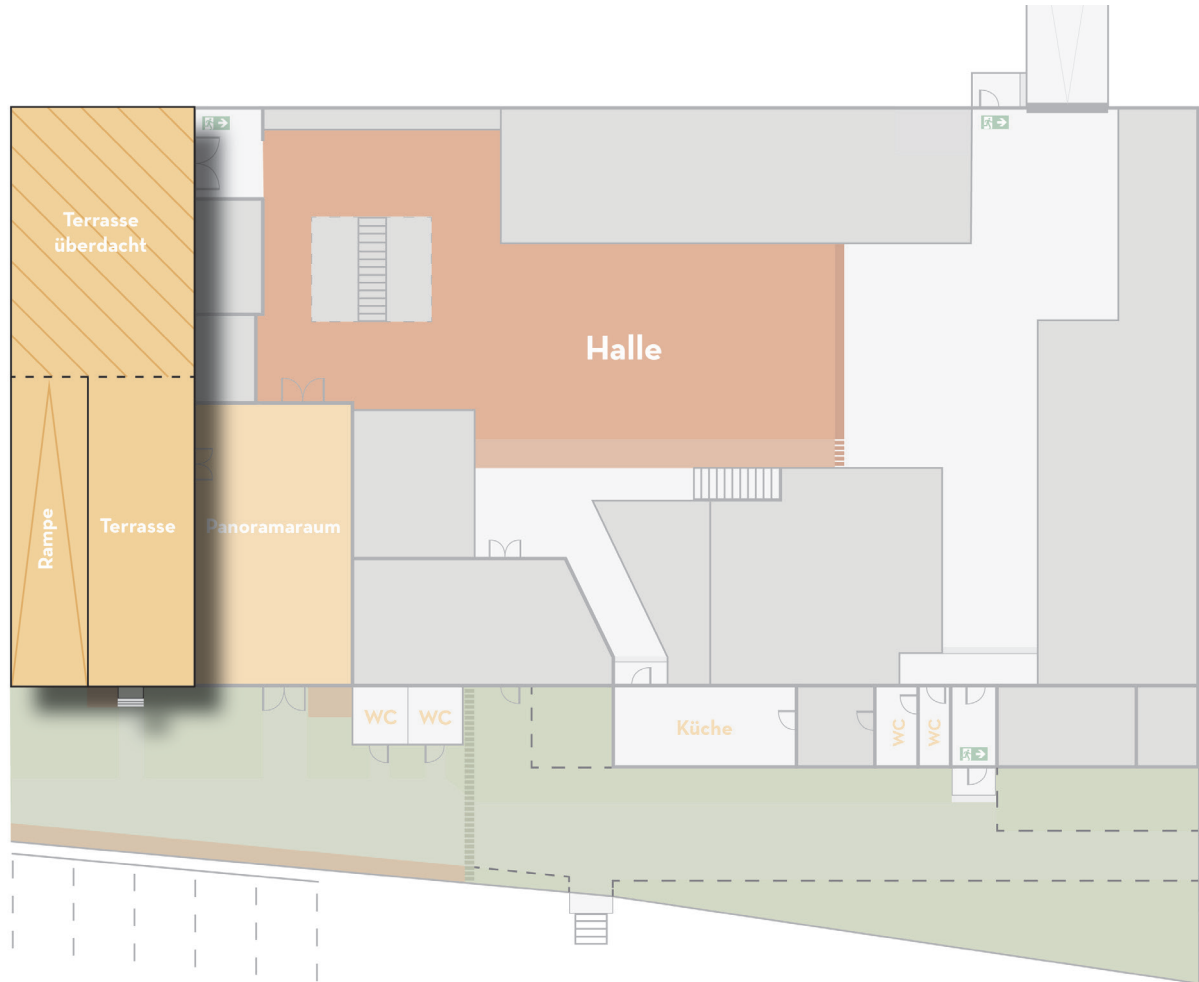


Panorama room



- Total area 90 m²
- Window front on the terrace side from old building windows
- Spree view
- Direct access to the terrace and the bank terrace
- Lounge furniture
- Lighting technology (8xPar56)
- Sound system
- Stone floor





Terrace

- Total area 215 m²
- Covered area
- Lighting technology (6xPar56)
- Direct access to the
- Panorama room
- Shore terrace on two levels with boat launch
- Heavy current connections (2x16A)





Extras



Location & Technical Service



Internet connection via WIFI



30 tables (1,6x0,8 m) and 100 chairs



Beverage service



Coffee machine (Panorama room)



Catering on request via external suppliers



dish ware



black mobile Moltonwalls 2x3m

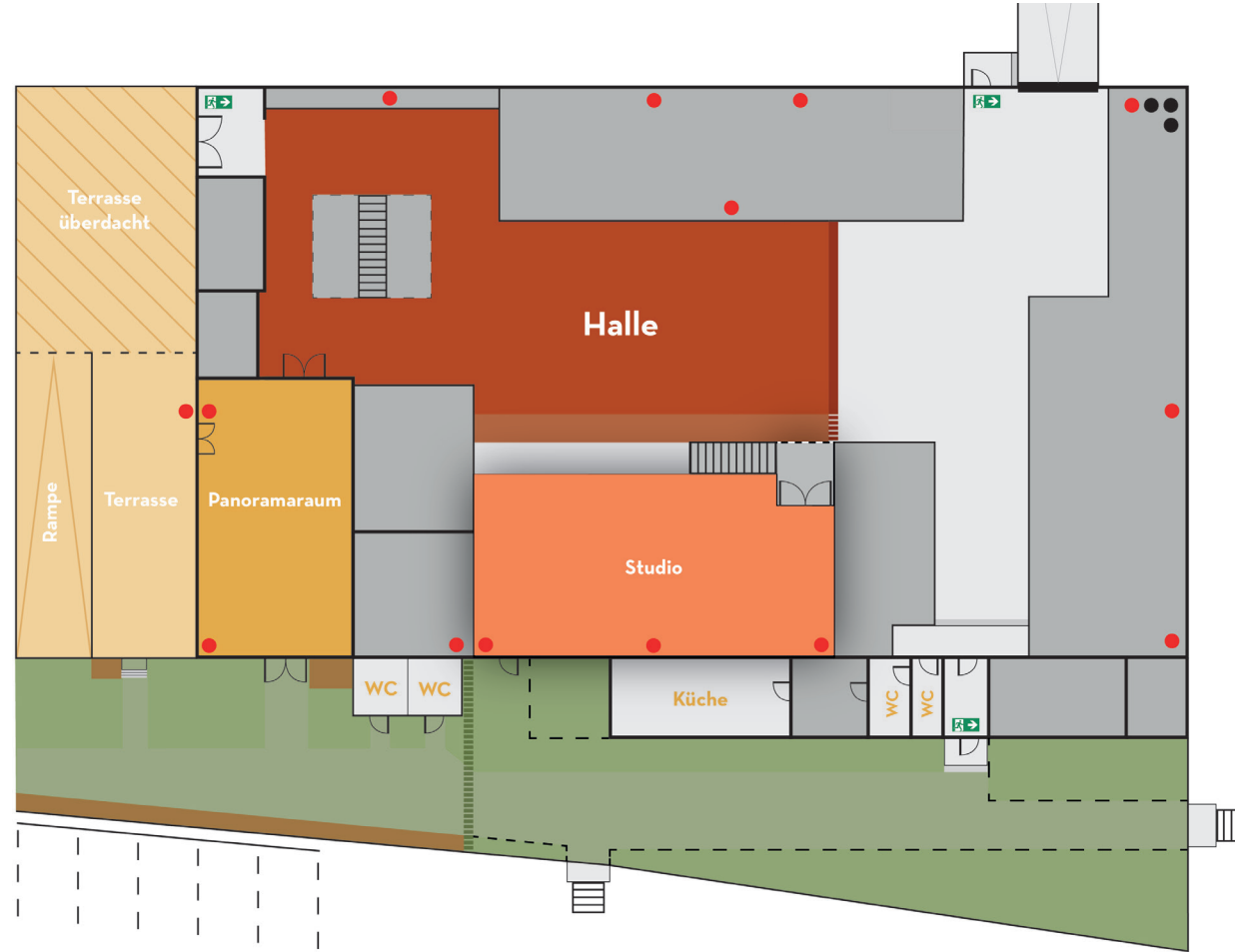
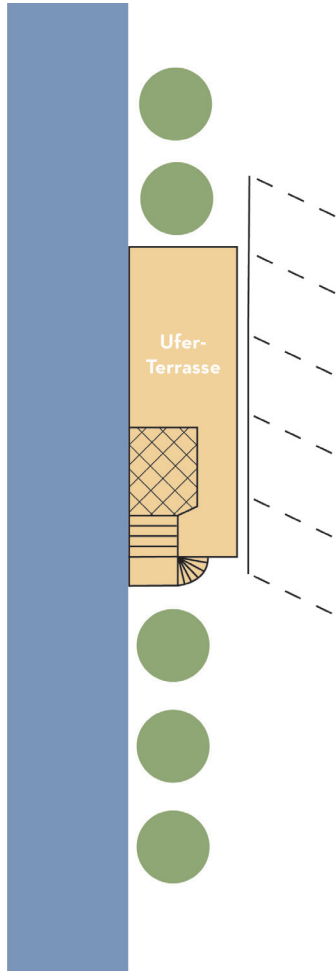


Fortclif can access studio directly



Lighting from outside possible

High voltage connectors



● 32A ● 16A

Prices



Hall

EDITORIAL PRODUCTION 10H	from 500 €
COMMERCIAL PRODUCTION 10H	from 750 €
VIDEO PRODUCTION 10H	from 1.200 €
MINIMUM RENTAL PERIOD	3 HOURS
CLEANING FEE	150 €
WEEKEND SURCHARGE	20 %
OVERTIME	10 %
ELECTRICITY	BY CONSUMPTION
HEATING	BY CONSUMPTION

Gallery 1. OG

EDITORIAL PRODUCTION 10H	from 350 €
COMMERCIAL PRODUCTION 10H	from 450 €
VIDEO PRODUCTION 10H	from 600 €
MINIMUM RENTAL PERIOD	3 HOURS
CLEANING FEE	60 €
WEEKEND SURCHARGE	20 %
OVERTIME	10 %
ELECTRICITY	BY CONSUMPTION
HEATING	BY CONSUMPTION



Panoramaroom

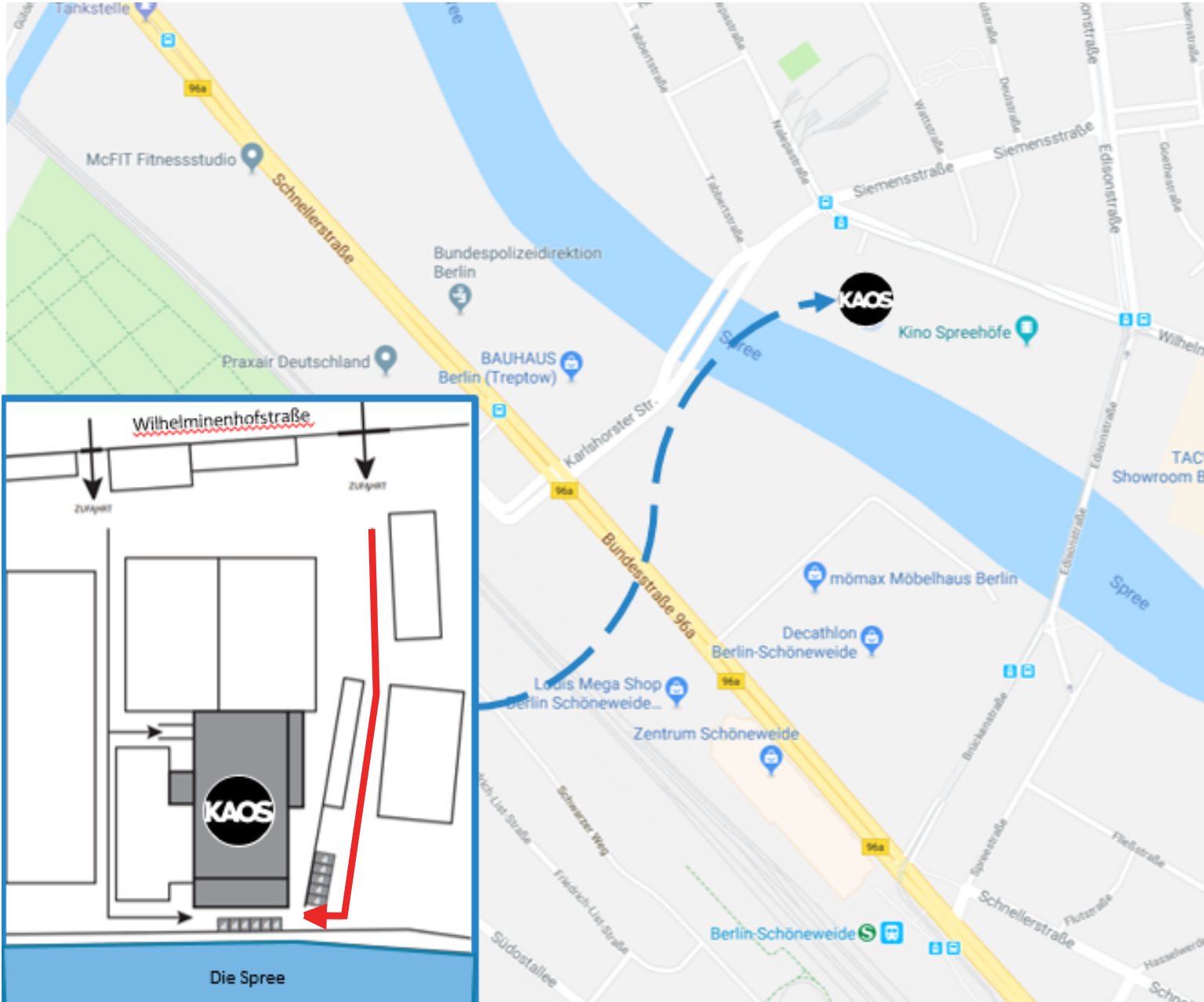
EDITORIAL PRODUCTION 10H	from 350 €
COMMERCIAL PRODUCTION 10H	from 450 €
VIDEO PRODUCTION 10H	from 600 €

MINIMUM RENTAL PERIOD	3 HOURS
CLEANING FEE	60 €
WEEKEND SURCHARGE	20 %
OVERTIME	10 %
ELECTRICITY	BY CONSUMPTION
HEATING	BY CONSUMPTION

Terrasse

EDITORIAL PRODUCTION 10H	from 250 €
COMMERCIAL PRODUCTION 10H	from 350 €
VIDEO PRODUCTION 10H	from 500 €

MINIMUM RENTAL PERIOD	2 HOURS
CLEANING FEE	150 €
WEEKEND SURCHARGE	20 %
OVERTIME	10 %
ELECTRICITY	BY CONSUMPTION
HEATING	BY CONSUMPTION



Address

KAOS Berlin
Wilhelminenhofstraße 92
12459 Berlin

via Car

- Exit at Späthstraße
- loading & unloading possible
- no parking areas

Public transport

- S-Bahn station Schöneweide
- Tram station Wilhelminenhofstr. / Edisonstr. (3 waiting minutes)

Contact

vermietung@kaosberlin.de
www.kaosberlin.de
Phone: 030 68910739

Photos by David Dollman 2017. Linda Hanses 2021, Laura Lehmann 2021,2022. All rights reserved.