

SHOOTING LOCATION





KAOS

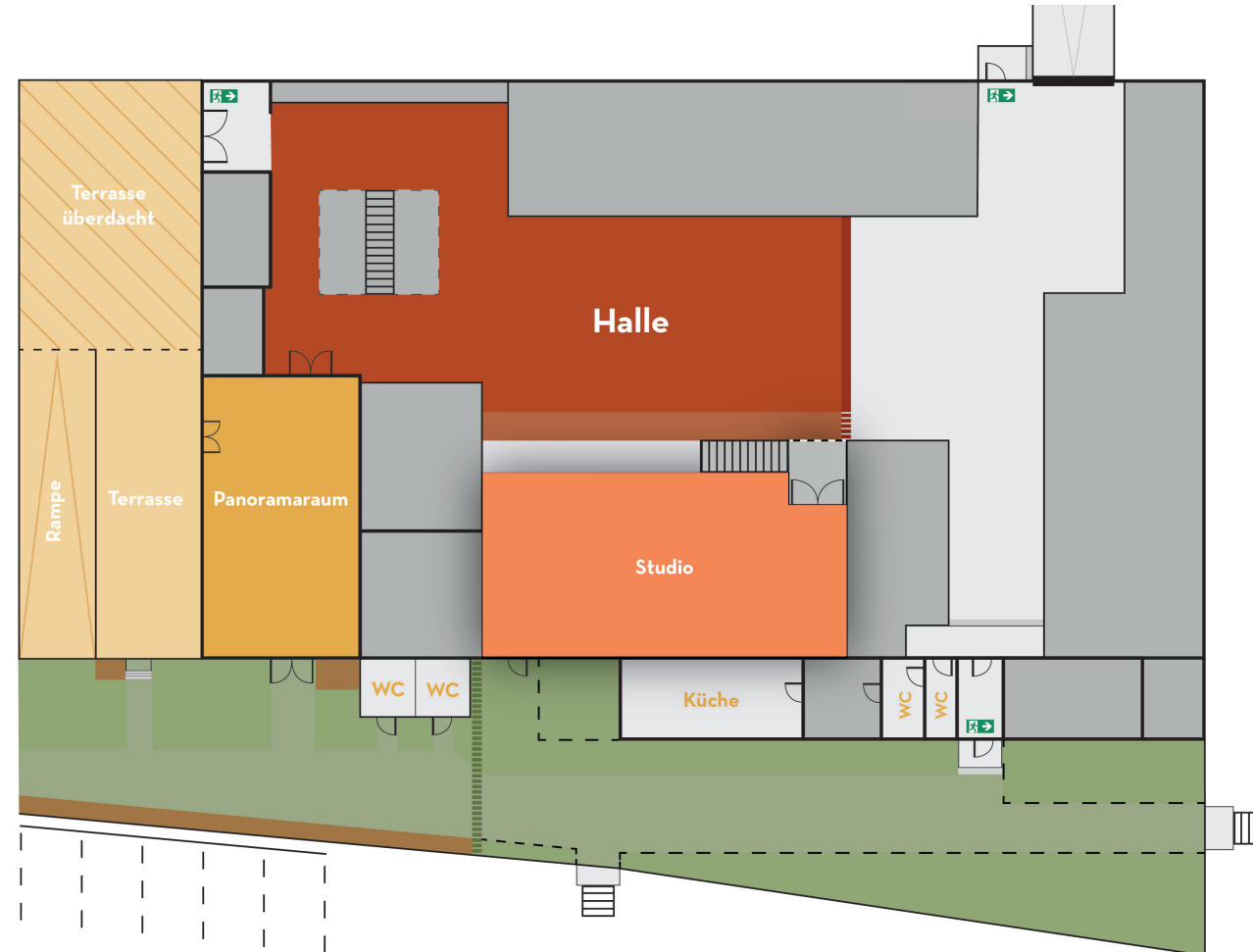
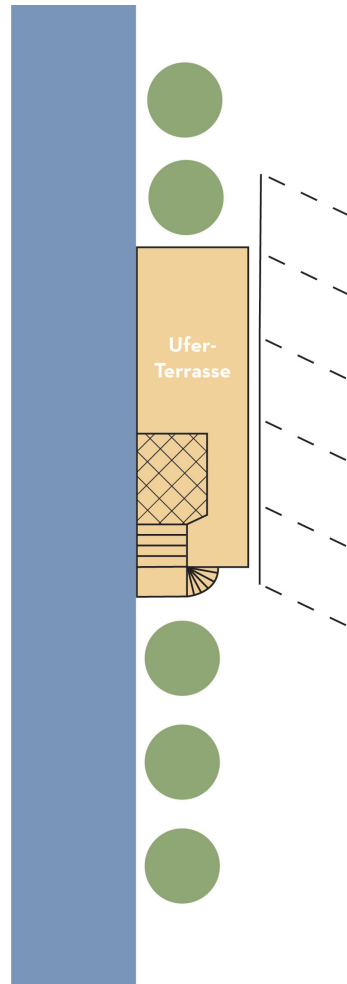


The creative KAOS (Kreative Arbeitsgemeinschaft Oberschöneweide) brings people together through the unique combination of coworking, event and shooting locations, and offers everyone space to develop, inspire, support and learn from each other.

Our light-flooded location with its industrial charm directly by the Spree river is characterised by a creative environment thanks to our interdisciplinary coworkers & artists, who can support you, if needed, in the realisation of your shoot with technical set-up, light & set design.

Unplastered brick walls, huge industrial windows, high ceilings, lovingly crafted woodworks & a creative environment all create a unique location for shoots and film sets.

FLOOR PLAN



LOCATIONS:

STUDIO

HALL

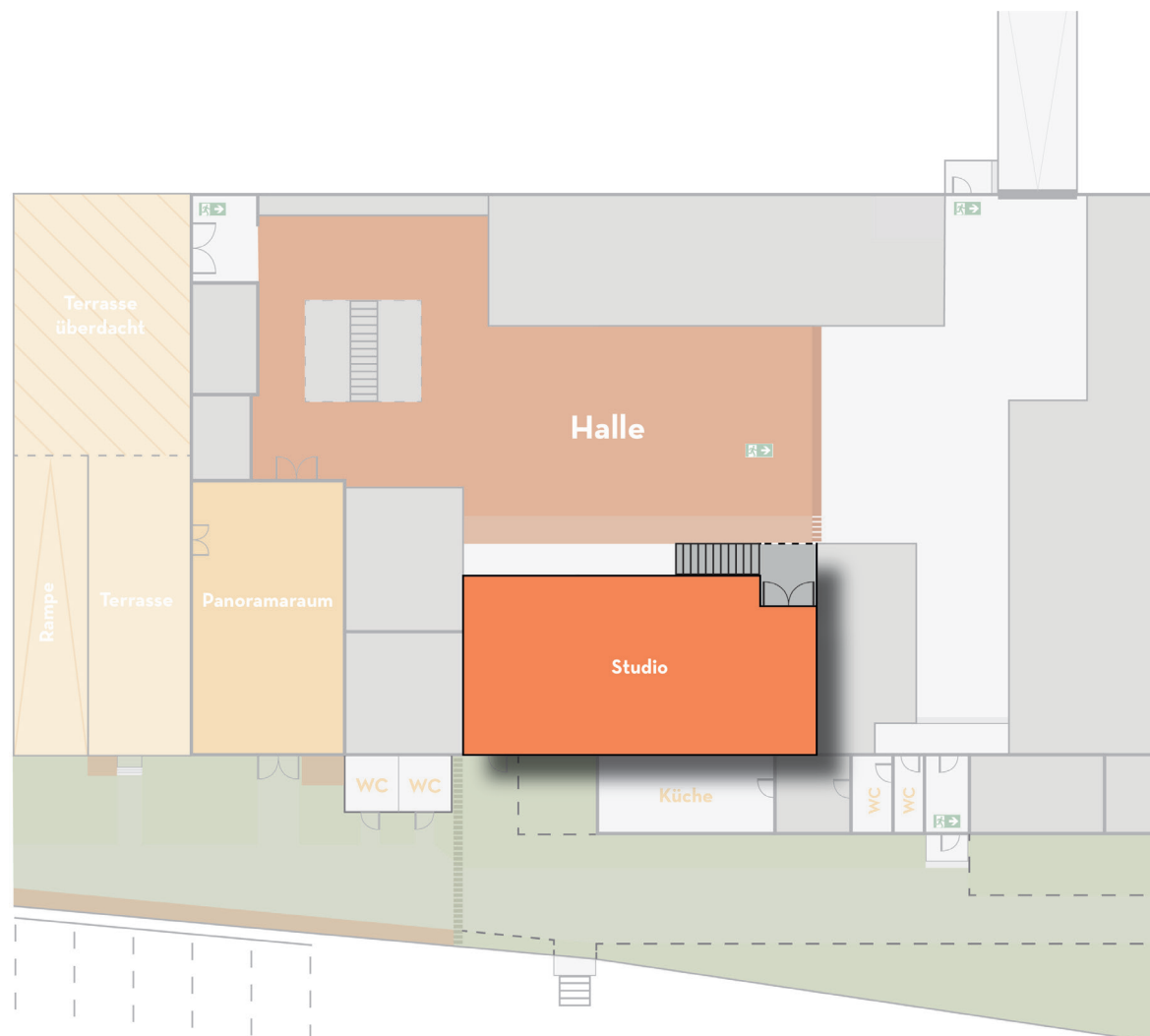
PANORAMAROOM

TERRACE

STUDIO 1st floor



1. OG - Studio



SPECIAL FEATURES

- Lots of daylight (South/East direction)
- White brick walls
- Large cast-iron mullioned windows
- River view
- Full window front towards the hall
- Industrial charm
- Room separation possible through curtains
- Can be completely darkened upon prior discussion
- Light objects can be suspended from the numerous steel girders
- Not the most suitable for audio recordings

ROOM

Total size	136 qm
Gable height	4m
Roof height	6m
Floor	Wood floor (grey), Beton-Look
Door measurements	2m x 2,2m

TECH

Light: Dimmable halogen lighting
Heavy Current Electricity: 3x16 A

INFRASTRUCTUR

Barrier-free	No
Heating	Electric Heaters



EQUIPMENT

INCLUDED

Molton curtains in black & white
Beige blinds on the inner bottom wooden window front
1x Cable reel
2x Heavy current adapters
1x Clothes rails with coat hooks
1x Trolley for equipment

AVAILABLE TO BOOK

2x Ventilators (each 15€/day incl. electricity)
4x Electric heaters (each 5€/hour)
1X Minibar (price per usage)
4x Cardboard podiums (each 10€/day)
4x Styro walls black/white (each 5€/day, 1,6mx1m)
7x Molton walls black (each 5€/day, 1,6mx3,2m)

Props on request

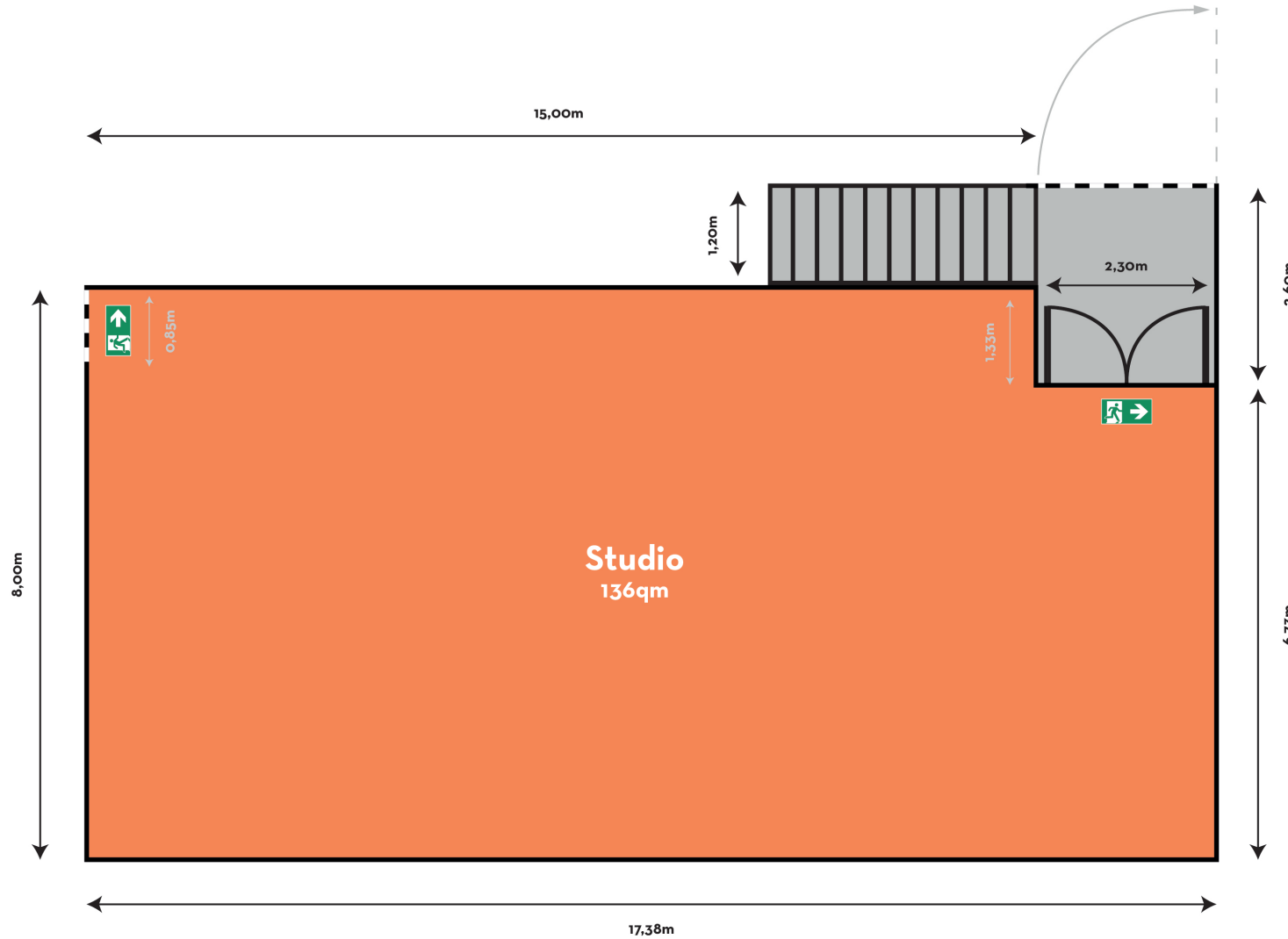
(Studio is rented unfurnished)

Removal/set up up curtain (each 30€/curtain)

(Studio is rented with curtains on the inside wall, the center area and the small window front. Additional costs only for dismantling and setting up again)

2x Molton Curtainrod (each 15€/day)

(Extra curtains for the 2 large outside windows)







PRICE

REGULAR OPENING TIMES: 9am-7pm, Mon-Frid

All prices are NET prices

STUDIO

EDITORIAL SHOOT

COMMERCIAL SHOOT

BIG PRODUCTION SHOOT

NON-PROFIT FILM

(COMMERCIAL) FILM

BIG PRODUCTION FILM

1 DAY (10H)

9am-7pm

350€

450€

600€

½ DAY (5H)

9am-7pm

200€

280€

380€

Social, cultural
and non-profit requests,
that we think should be supported,
we can assist with special discounts.

Please feel free to contact us.

CLEANING FEE

60€

SINGLE HOUR

10%

OUTSIDE OPENING HOURS

(Regular opening times 9am-7pm)

20% + Contact
person

OVERTIME ON THE DAY

(per starting hour)

10% + Contact
person

ELECTRICITY FLAT RATE DAY

37,82€

HEAVY CURRENT FLAT RATE DAY 16A

88,24€

HEAVY CURRENT FLAT RATE DAY 32A

126,05€

CONTACT PERSON

32€/h

(contact person necessary
outside opening hours)

HEATING

Electric heaters 5€/h each per hour

PROPS, SET, LIGHT, etc.

On request

STORAGE

For the storage of sets, equipment,
deliveries, etc. a service fee will be charged
according to expenditure.

EG - Panoramaraum

PANORAMAROOM



SPECIAL FEATURES

- Lots of daylight (South direction)
- View on the river
- Old, wooden, picturesque windows on the terrace side
- Direct access to the terrace
- Ground level to the hall
- Industrial charm
- Can be completely darkened
- Better suited for sound recordings thanks to sound-absorbing foam on a wall and distance from the workshops, but only to a limited extent and on request
- Accessible by car

ROOM

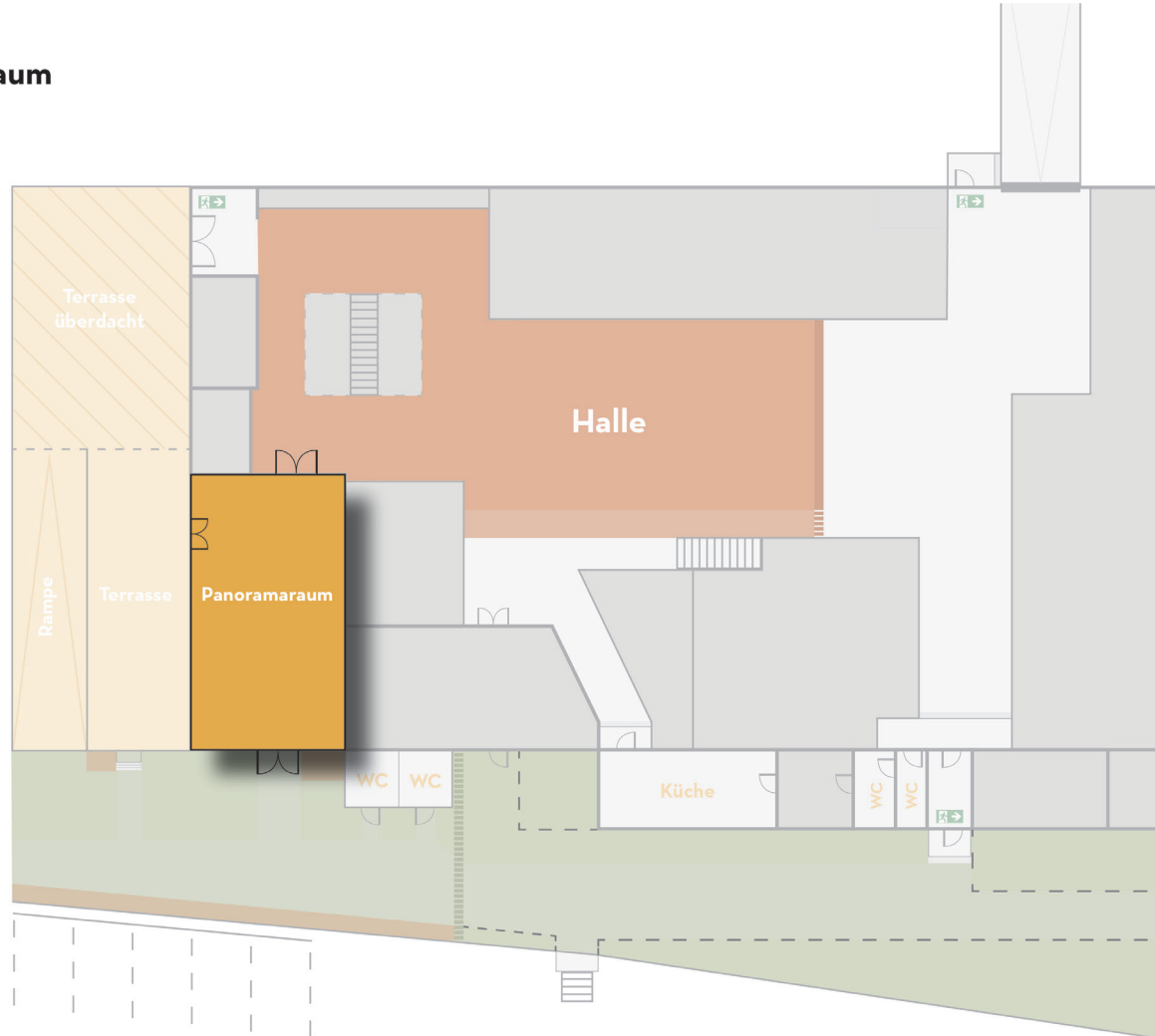
Size	90 qm
Roof height	5m
Floor	Stone floor
Door measurements hall	2,22m x 2,55m
Door measurements terrace	1,50m x 1,96m

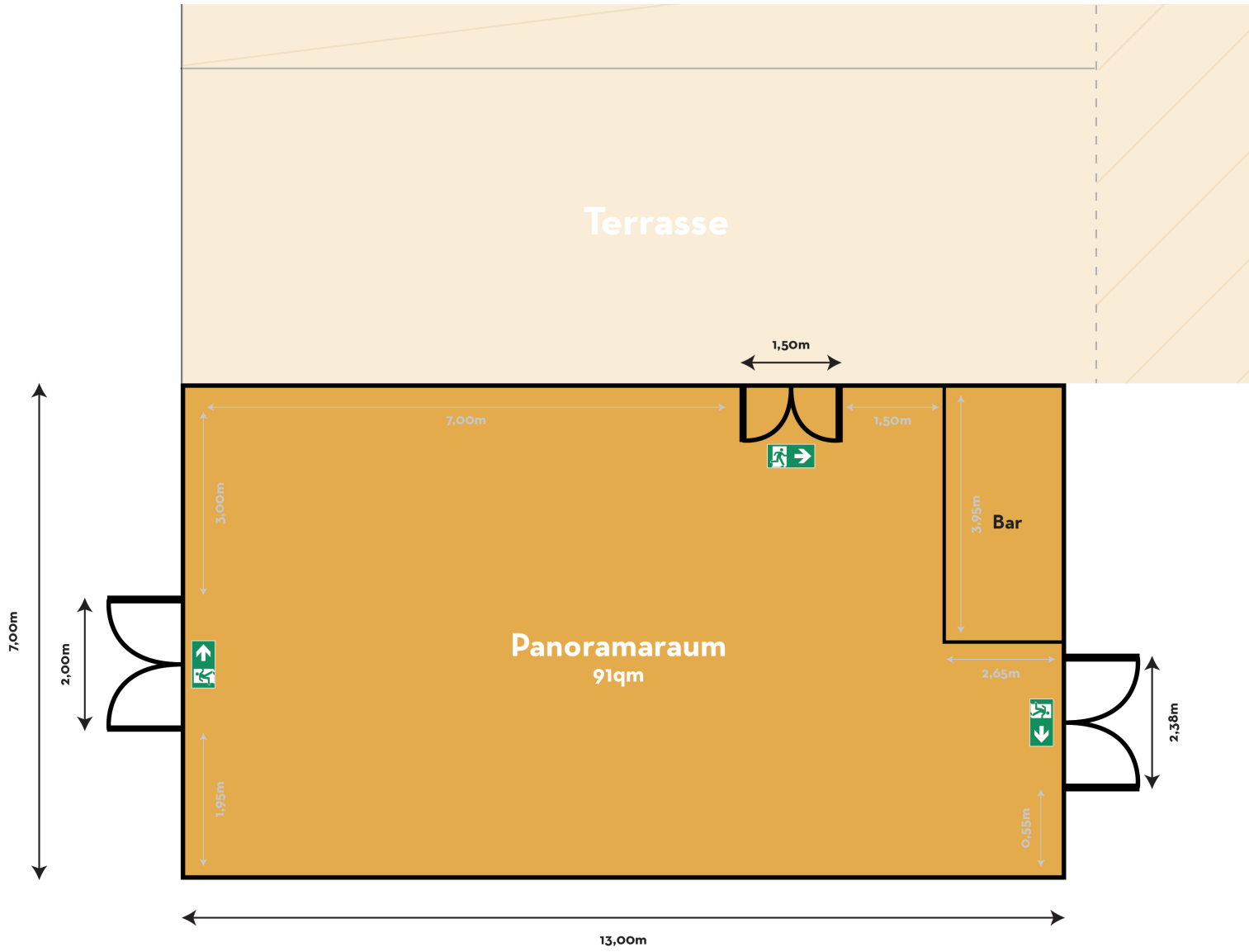
TECH

Light: Dimmable event lights
Heavy electric current: 1x16 A

INFRASTRUCTURE

Barrier-free	Yes
Heating	Central heating





EQUIPMENT



INCLUDED

Molton curtains black
 Bar (not incl. equipment), with fridge
 1x Cable reel
 2x Heavy current adapters
 1x Clothes rail with coat hooks
 1x Projection screen

AVAILABLE TO BOOK

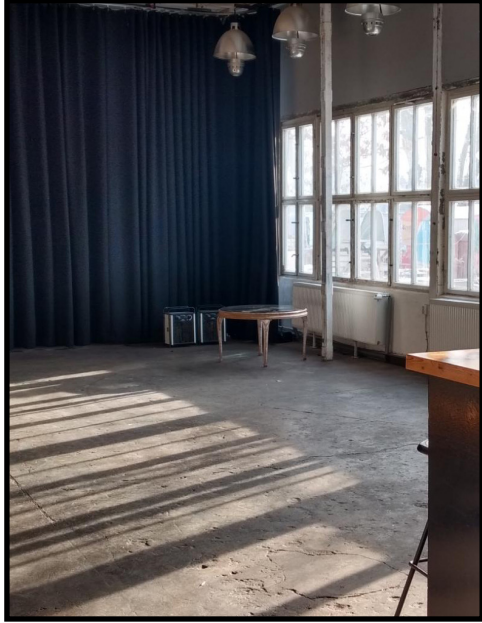
1x Projector usage (60€/day incl. briefing)
 2x Ventilator (each 15€/day incl. electricity)
 4x Electric heaters (each 5€/hour)
 4x Cardboard podiums (each 10€/day)
 4x Styro walls black/white (each 5€/day, 1,6mx1m)
 7x Molton walls black (each 5€/day, 1,6mx3,2m)

Props on request

(Studio is rented unfurnished.)

Removal/set up up curtain (each 30€/curtain)

(Studio is rented with curtains on the inside wall, the centre area and the small window front. Additional costs only for dismantling and setting up again)



© Max Threlfall



PRICE

REGULAR OPENING TIMES: 9am-7pm, Mon-Frid

All prices are NET prices

PANORAMAROOM

EDITORIAL SHOOT
COMMERCIAL SHOOT
BIG PRODUCTION SHOOT

1 DAY (10H)

9am-7pm

350€

450€

600€

½ DAY (5H)

9am-7pm

200€

280€

380€

Social, cultural
and non-profit requests,
that we think should be supported,
we can assist with special discounts.

Please feel free to contact us.

NON-PROFIT FILM
(COMMERCIAL) FILM
BIG PRODUCTION FILM

450€

600€

800€

250€

380€

480€

CLEANING FEE

60€

SINGLE HOUR

10%

OUTSIDE OPENING HOURS

(Regular opening times 9am-7pm)

20% + Contact
person

OVERTIME ON THE DAY

(per starting hour)

10% + Contact
person

ELECTRICITY FLAT RATE DAY

37,82€

HEAVY CURRENT FLAT RATE DAY 16A

88,24€

HEAVY CURRENT FLAT RATE DAY 32A

126,05€

CONTACT PERSON

32€/h

(contact person necessary
outside opening hours)

HEATING

Electric heaters 5€/h each per hour

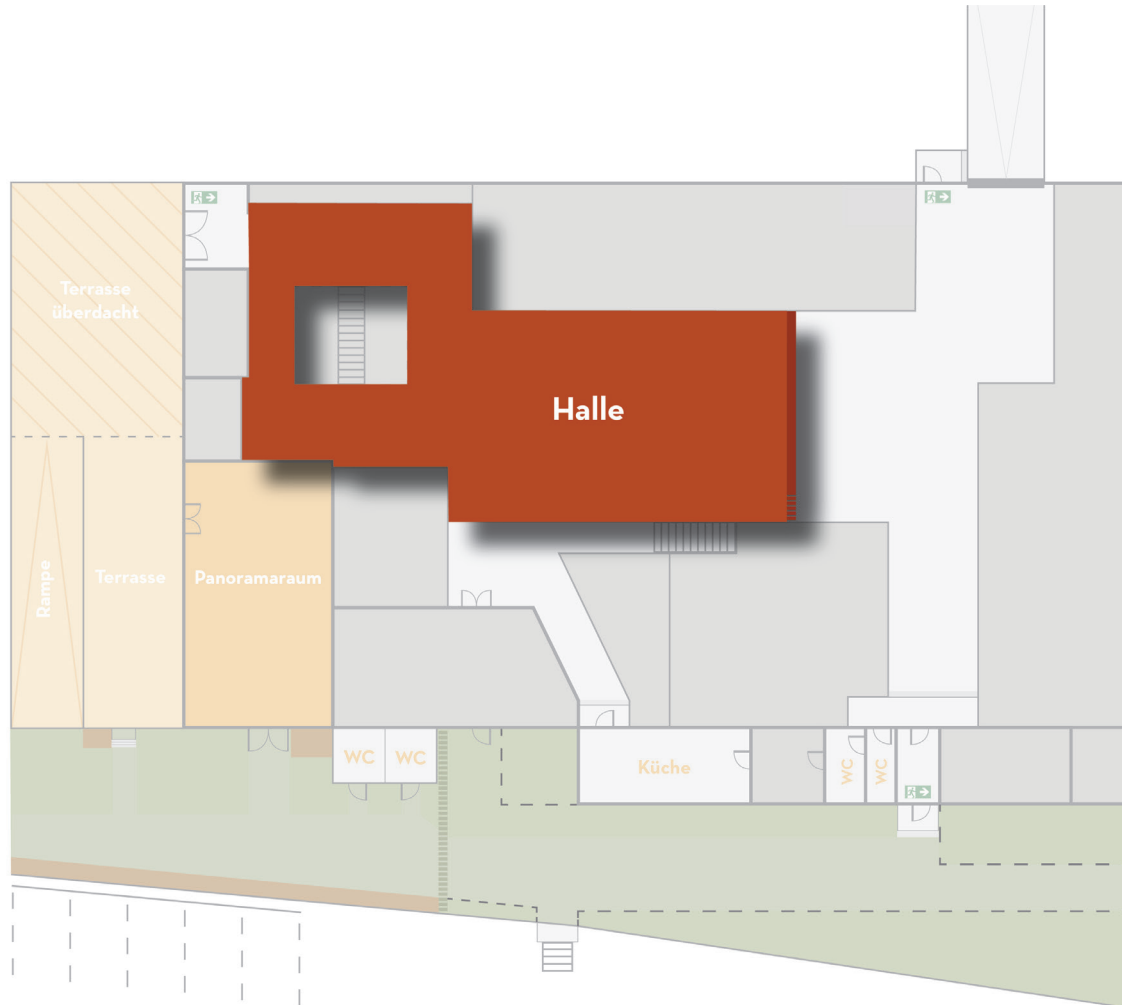
PROPS, SET, LIGHT, etc.

On request

STORAGE

For the storage of sets, equipment,
deliveries, etc. a service fee will be charged
according to expenditure.

EG - Halle



HALL

SPECIAL FEATURES

- Up to 160qm floor space with 8.5m width and 19m length
- Industrial charm with steel framework and concrete floor
- Light objects can be suspended from the numerous steel beams
- Accessible by car
- Accessible by forklift truck
- Level access to the rolling gate and loading ramp
- Can only be completely darkened to a limited extent due to adjacent rooms
- Only partially suitable for sound recordings

ROOM

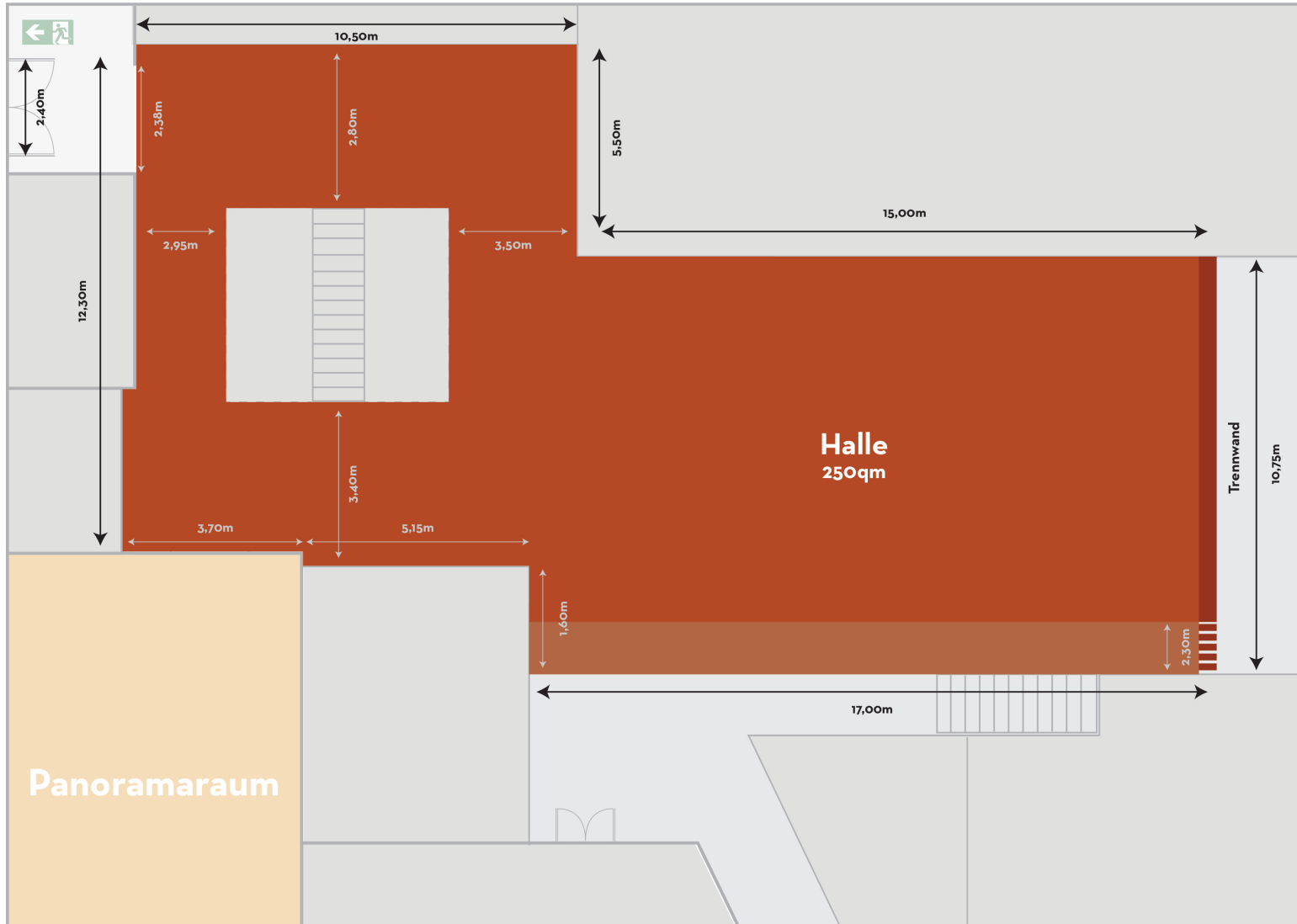
Total size	250 qm
Roof height	13m
Gable height	6,5m
Floor	Concrete floor (grey)
Door entrance	2,22m x 2,55m
Rolling gate door	3,40m x 3,85m

TECH

Light: Par64x50
Heavy Current Electricity: 3x32 A and 8x16A

INFRASTRUCTURE

Barrier-free	Yes
Heating	No



EQUIPMENT



INCLUDED

- 1x Cable reel
- 2x Heavy current adapters
- 1x Clothes rail with coat hooks

AVAILABLE TO BOOK

- 2x Ventilators (each 15€/day incl. electricity)
- 4x Cardboard podiums (each 10€/day)
- 4x Styro walls black/white (each 5€/day, 1,6mx1m)
- 7x Molton walls black (each 5€/day, 1,6mx3,2m)

Props on request

(Hall is rented unfurnished)

More space on request

Our own private storage corner is located on the right-hand side of the hall beyond the area marked in red. If required, this area can be cleared and rented out. For this a service fee will be charged according to expenditure.





PRICE

REGULAR OPENING TIMES: 9am-7pm, Mon-Frid

All prices are NET prices

HALL

EDITORIAL SHOOT
COMMERCIAL SHOOT
BIG PRODUCTION SHOOT

1 DAY (10H)

9am-7pm

500€

750€

1200€

½ DAY (5H)

9am-7pm

300€

420€

750€

Social, cultural
and non-profit requests,
that we think should be supported,
we can assist with special discounts.

Please feel free to contact us.

NON-PROFIT FILM
(COMMERCIAL) FILM
BIG PRODUCTION FILM

750€

1200€

1400€

420€

700€

800€

CLEANING FEE

150€

SINGLE HOUR

10%

OUTSIDE OPENING HOURS

(Regular opening times 9am-7pm)

20% + Contact
person

OVERTIME ON THE DAY

(per starting hour)

10% + Contact
person

ELECTRICITY FLAT RATE DAY

37,82€

HEAVY CURRENT FLAT RATE DAY 16A

88,24€

HEAVY CURRENT FLAT RATE DAY 32A

126,05€

CONTACT PERSON

32€/h

(contact person necessary
outside opening hours)

HEATING

Electric heaters 5€/h each per hour

PROPS, SET, LIGHT, etc.

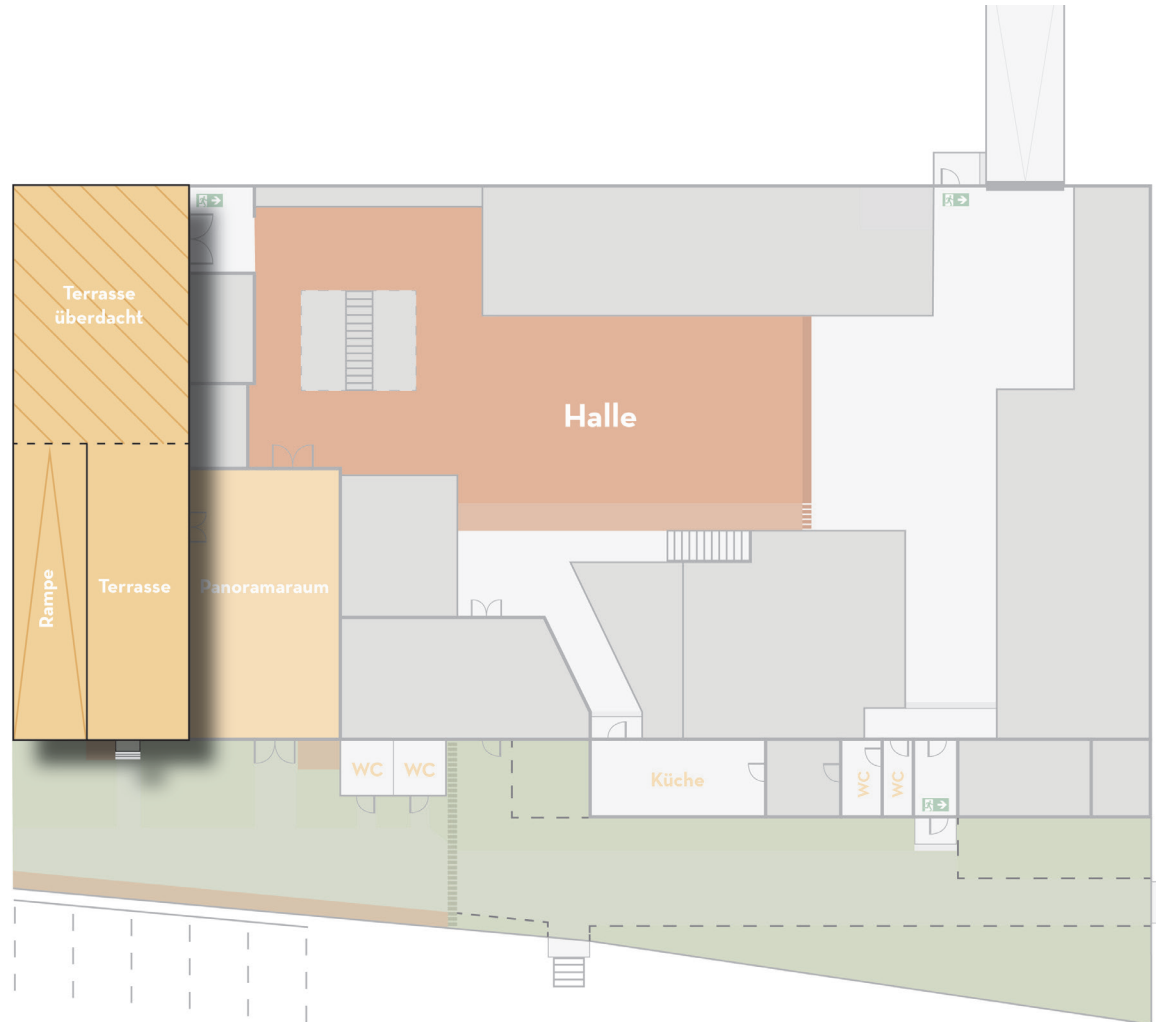
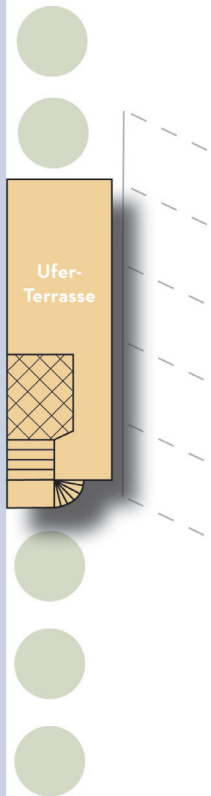
On request

STORAGE

For the storage of sets, equipment,
deliveries, etc. a service fee will be charged
according to expenditure.

TERRACE

EG - Terrassen



SPECIAL FEATURES

- Direct access to the panorama room
- Shore terrace on two levels with landing stage to the water
- Suitable for boat mooring
- Terrace area with roof
- With comfortable, handmade wooden furniture surrounded by greenery
- Right next to the parking lot

ROOM

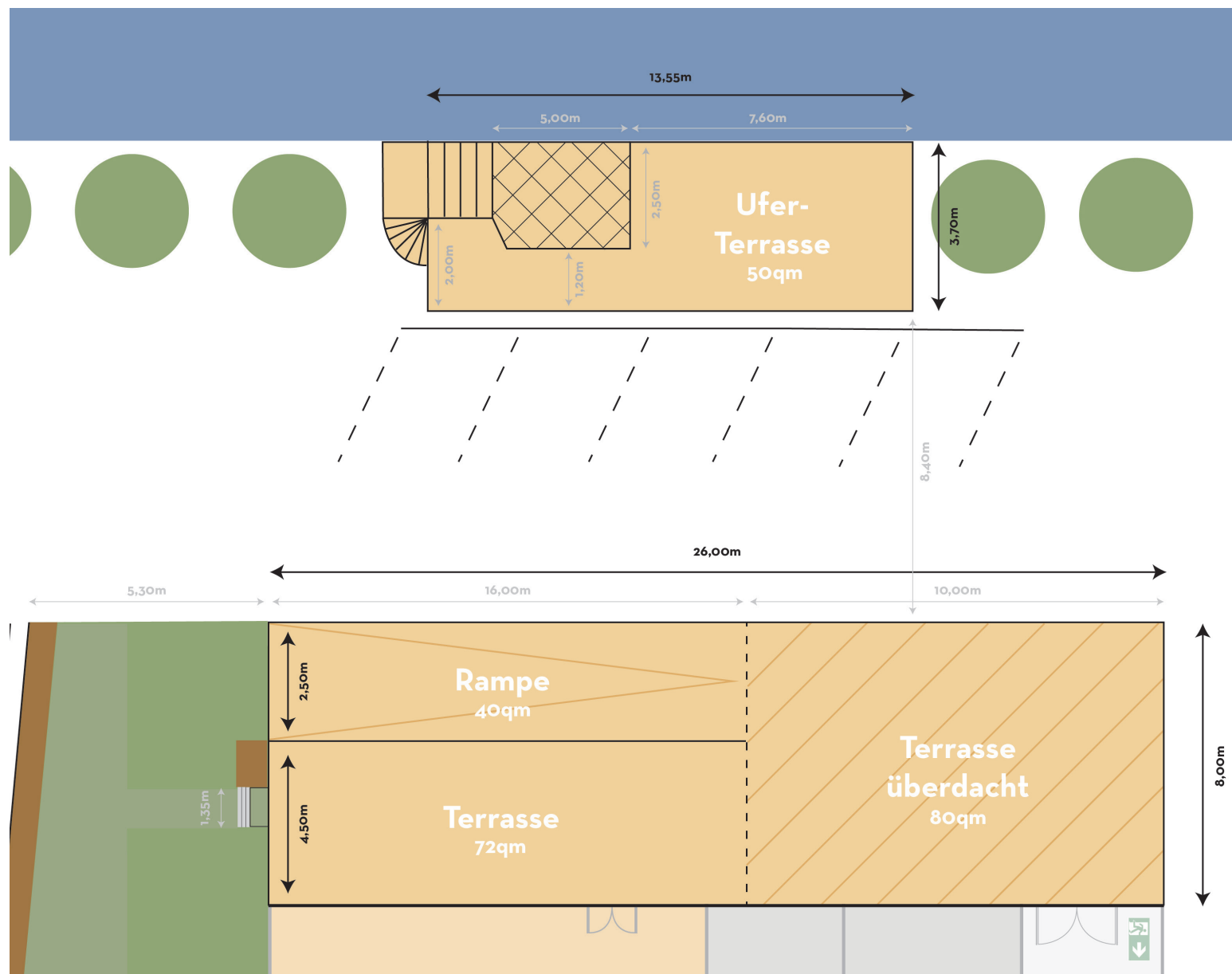
Total Size 242qm (not incl. parking space)
Floor Stone floor (grey)

TECH

Lights: 6xPar56
Heavy Current Electricity: 2x16 A

INFRASTRUCTURE

Barrier-free	Yes
Heating	No



EQUIPMENT



INCLUDED

- 1x Cable reel
- 2x Heavy current adapters
- 1x Clothes rails with coat hooks
- 2x Big wooden tables
- Seating

AVAILABLE TO BOOK

- 1x Mobile outdoor kitchen (50€/day incl. gas)
- 2x Ventilator (each 15€/day incl. electricity)
- 4x Cardboard podiums (each 10€/day)
- 4x Styro walls black/white (each 5€/day, 1,6mx1m)
- 7x Molton walls black (each 5€/day, 1,6mx3,2m)

Tableware on request

Props on request

(Terrace is rented with existing tables and seating)





PRICE

REGULAR OPENING TIMES: 9am-7pm, Mon-Frid
All prices are NET prices

TERRACE

EDITORIAL SHOOT
COMMERCIAL SHOOT
BIG PRODUCTION SHOOT

1 DAY (10H)

9am-7pm

300€
400€
600€

½ DAY (5H)

9am-7pm

180€
250€
380€

Social, cultural
and non-profit requests,
that we think should be supported,
we can assist with special discounts.

Please feel free to contact us.

NON-PROFIT FILM
(COMMERCIAL) FILM
BIG PRODUCTION FILM

400€
600€
1000€

230€
380€
600€

CLEANING FEE
SINGLE HOUR
OUTSIDE OPENING HOURS

(Regular opening times 9am-7pm)

150€
10%
20% + Contact
person

OVERTIME ON THE DAY
(per starting hour)

10% + Contact
person

ELECTRICITY FLAT RATE DAY
HEAVY CURRENT FLAT RATE DAY 16A
HEAVY CURRENT FLAT RATE DAY 32A

37,82€
88,24€
126,05€

CONTACT PERSON
(contact person necessary
outside opening hours)

32€/h

HEATING

Electric heaters 5€/h each per hour

PROPS, SET, LIGHT, etc.

On request

STORAGE

For the storage of sets, equipment,
deliveries, etc. a service fee will be charged
according to expenditure.



EXTRAS



Location & technical service



Individual set & lighting design



Internet connection via WIFI



Props



Coffee/tea

(15€/each for 1x large coffee pot and range of teas and milks)



Beverages

(Minibar, drinks machine or pre-order)



Catering by arrangement via external providers



Forklift

(50€/per hour incl. driver and electricity)



Discounted rental combinations possible

(also for team meetings, catering, etc.)



PROPS & SETS



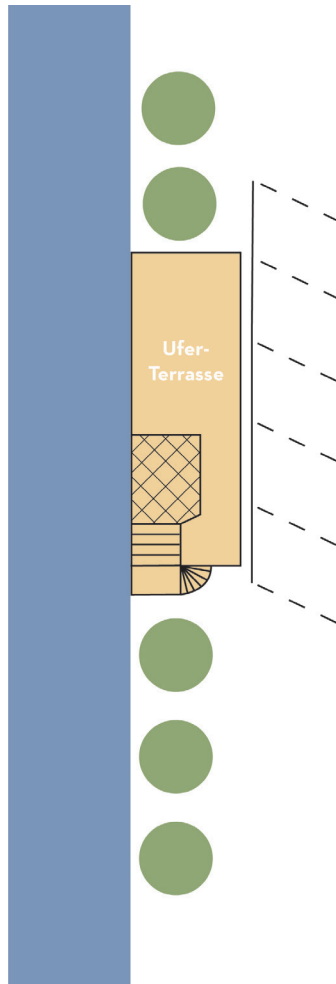
Thanks to our hard-working set designers, upcyclers, artists and craftspeople we have a large variety of special props available at all times.

Carpets, tables, benches, chairs, sofas, plants, paintings, sculptures, event equipment, lights and film installations... There's all kinds of things available.

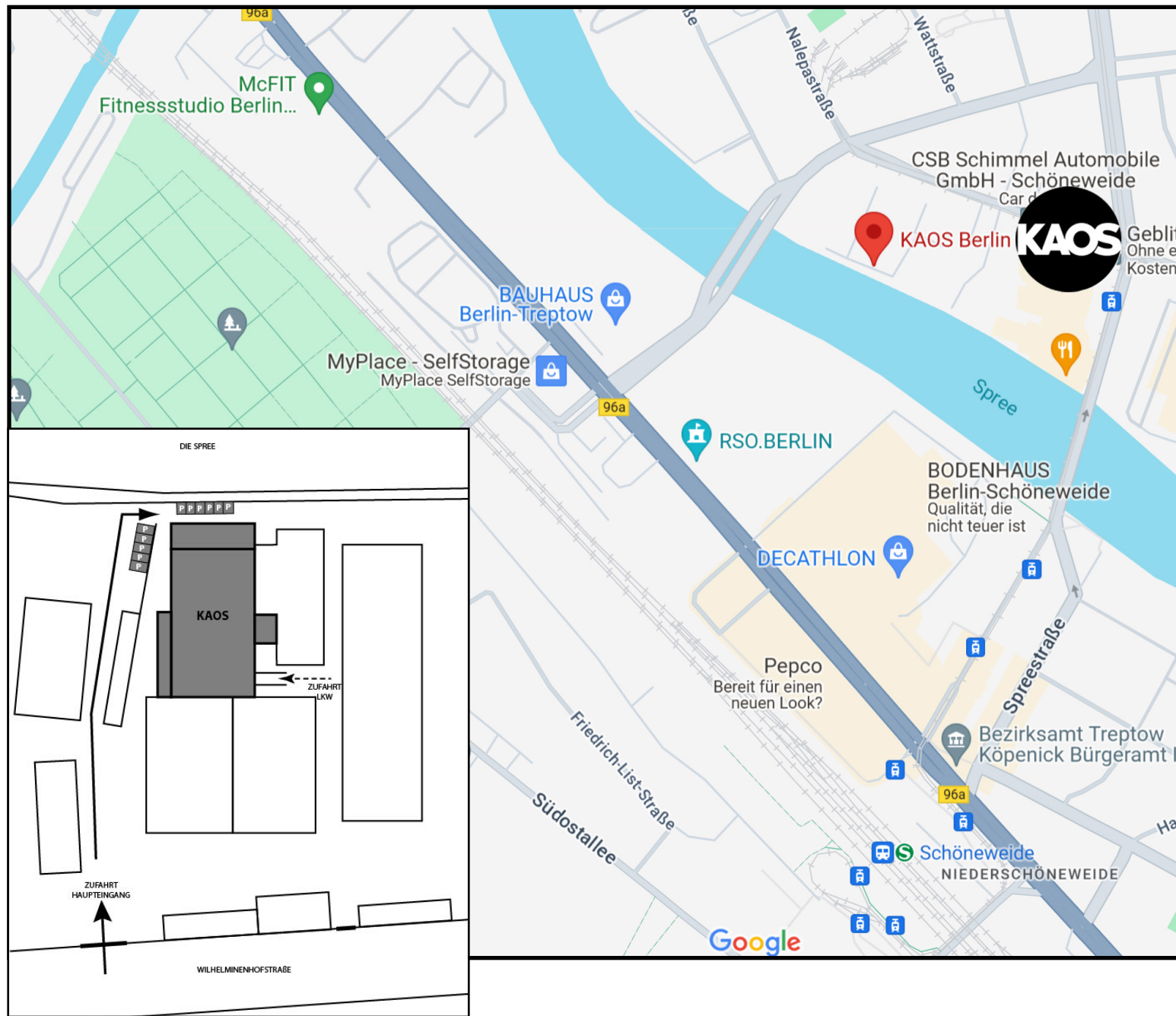
Even individual wishes and sets can be realised here thanks to our technicians, light and set designers.

We will gladly send you our prop list, or let us inspire you on site during a viewing.

HEAVY CURRENT CONNECTIONS



● 32A ● 16A



HOW TO FIND US



KAOS Berlin
Wilhelminenhofstraße 92
12459 Berlin

BY CAR

- Highway exit 'Späthstraße'
- Rolling gate with loading ramp at the 'Zufahrt LKW' (see map)
- Parking spaces directly next to the river at the front or on the left
- Four larger shoots with bigger vehicles, please park on the main road with the city's permission

BY PUBLIC TRANSPORT

- S-Bahn station Schöneweide
- Tram Station Wilhelminenhofstr. / Edisonstr. (3 walking minutes)

CONTACT

studio@kaosberlin.de
www.kaosberlin.de
Telefon: 017647603413



TERMS & CONDITIONS



CANCELLATION FEE

The cancellation fee is based on the agreed rent and depending on the time of cancellation prior to the shooting day:

Cancellation 10 days prior: 25%

Cancellation 5-3 days prior: 70%

Cancellation 9-5 days prior: 50%

Cancellation 3-0 days prior: 100%

TERMS OF PAYMENT

The agreed rent is payable after the shoot within 14 days upon receipt of the final invoice.

Except any additional costs need to get added (last-minute services, damage, etc.) the final invoice will be the same as the agreed rent. An advance payment is not necessary.

RENT PERIOD

The rent indicated in the price list is within normal opening hours of 9am-7pm.

Rent earlier/after those hours have an additional fee of 20% and require a booked contact person.

If the tenant exceeds the agreed rental period, then they will be charged overtime and an additional fee of 10% per hour. Each started hour is counted as a full hour. After the renting period, the premises should be left in their original condition. Due to internal organization, all previous arrivals or later departures as well as deliveries and pickups must be discussed in advance with the studio team.

LIABILITY

For damage and loss of the rental object, the building, the associated facilities, equipment, property and personal injury, including any consequential damage, the lessee is liable for compensation, as far as this damage caused by him or the persons belonging to its production or by third parties culpably, who are in the rented rooms with his knowledge and with his acquiescence or at his instigation. KAOS is not liable for the equipment, property or personal injuries of the production team, or for any items they store at KAOS.

SOUND

Our industrial hall is old, not well sound isolated and all locations share the space with our coworkers. Sound recordings are possible but with limitations, it is best to discuss it with us prior. If your production will make a lot of noise and potentially bother the coworkers, please communicate this to us beforehand as well.

**INSIDE THE BUILDING, WE HAVE A STRICT NON-SMOKING POLICY.
SHOOTS WITH FIRE, CANDLES, ETC. ONLY ON REQUEST.**